

Quick Start Guide

2.5G L2 Ultra PoE++ Switch

ECS4125-10P

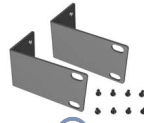


www.edge-core.com

Package Contents



①



②



③



④



⑤

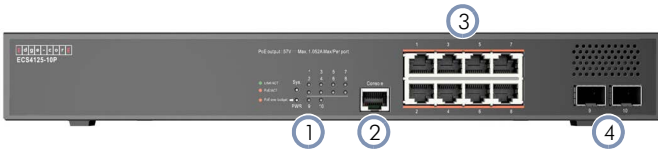


⑥

1. 2.5G L2 Ultra PoE++ Switch
2. Rack mounting kit—2 brackets and 8 screws
3. Power cord

4. Four adhesive rubber feet
5. Console cable—RJ-45 to DE-9
6. Documentation—*Quick Start Guide* (this document) and *Safety and Regulatory Information*

Overview

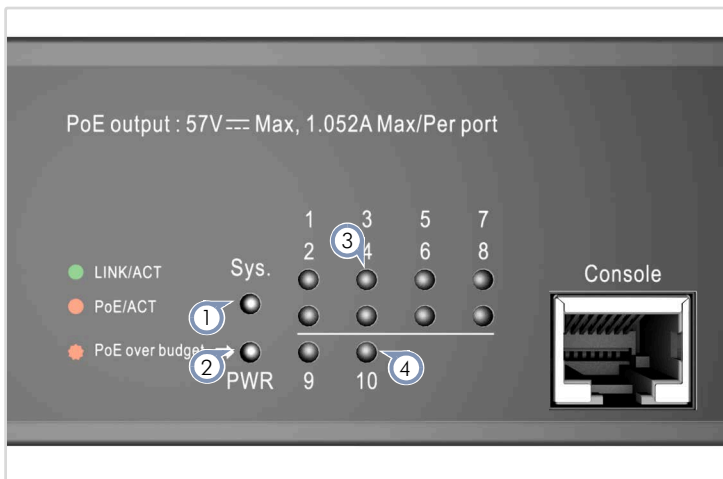


1. System LEDs
2. Console port
3. 8 x 10/100/1G/2.5G RJ-45 PoE ports
4. 2 x 1/10G SFP+ ports



5. Ground screw
6. AC power socket

System/Port LEDs



1. **Sys:** Green (OK), Blinking Green (booting), Orange (fault)
2. **PWR:** Green (OK), Orange (maximum PoE budget)
3. **RJ-45 1G Ports:** Green/Blinking (link/activity), Orange (PoE link)
4. **SFP+ 10G Ports:** Green (10G), Orange (1G)



Installation

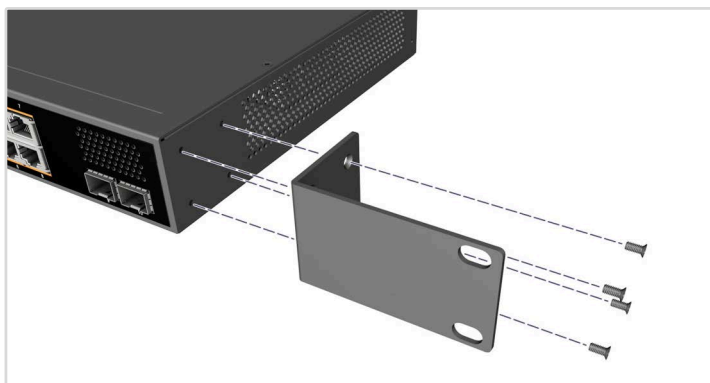


Warning: For a safe and reliable installation, use only the accessories and screws provided with the device. Use of other accessories and screws could result in damage to the unit. Any damages incurred by using unapproved accessories are not covered by the warranty.

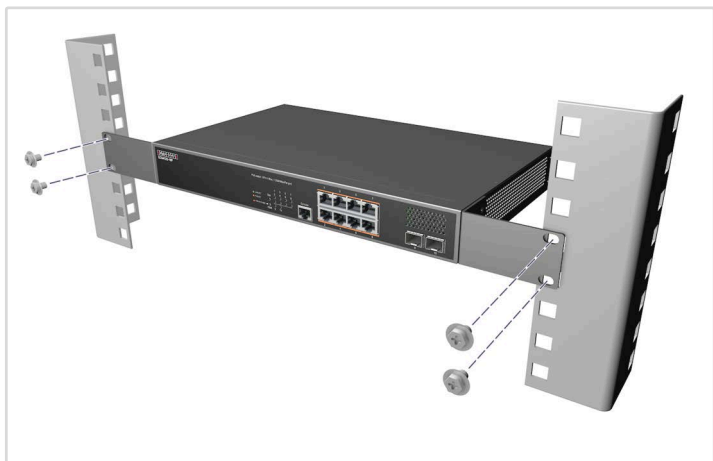
Avertissement: Pour une installation sûre et fiable, utilisez uniquement les accessoires et les vis fournies avec l'appareil. L'utilisation d'autres accessoires et vis pourrait endommager l'appareil. Les dommages causés par l'utilisation d'accessoires non approuvés ne sont pas couverts par la garantie.



Note: The drawings in this document are for illustration only and may not match your particular model.

1 Mount the Device**1. Attach the Brackets**

Use the included screws to attach the brackets.

**2. Mount the Device**

Mount the device in the rack and secure it with rack screws.



Note: The device can also be installed on a desktop or shelf using the included adhesive rubber feet.

2 Ground the Device

Attach a lug (not provided) to a #18 AWG minimum grounding wire (not provided), and connect it to the grounding point on the rear panel. Then connect the other end of the wire to rack ground.

3 Connect Power

Connect an AC power source to the device.

4 Make Network Connections**RJ-45 PoE Ports**

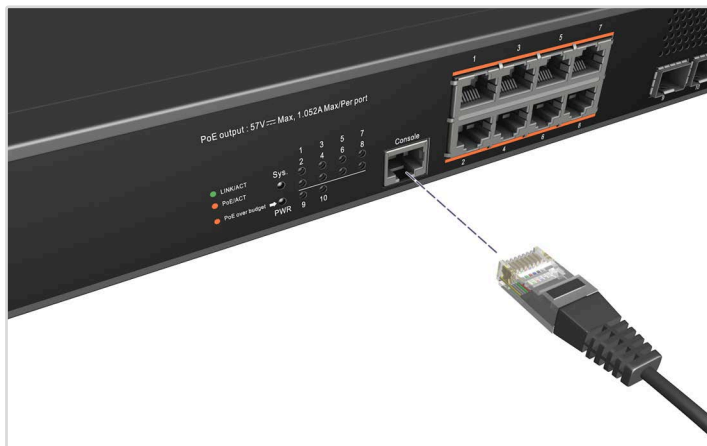
Connect Cat. 5e or better twisted-pair cable.

SFP+ Ports

Install transceivers and then connect fiber optic cabling to the transceiver ports. The following transceivers are supported:

- 100BASE-SX/LX/EX/ZX and 1000BASE-T (RJ-45)
- 10GBASE-SR/LR/ER/ZR

5 Make Management Connections



RJ-45 Console Port

Connect the included console cable and then configure the serial connection: 115200 bps, 8 characters, no parity, one stop bit, 8 data bits, and no flow control.

Hardware Specifications

Size (WxDxH)	330 x 207.9 x 47.3 mm (12.99 x 8.19 x 1.86 in.)
Weight	2.41 kg (5.31 lb)
Temperature	Operating: 0° C to 50° C (32° F to 122° F) Storage: -40° C to 70° C (-40° F to 158° F)
Humidity	Operating: 10% to 90% (non-condensing)
Power Consumption	370 Watts maximum
PoE Budget	240 Watts
Input Power Rating	100-240 VAC, 50-60Hz, 4 A

Regulatory Compliances

Emissions	EN 55032:2015/A1:2020 EN IEC 61000-3-2:2019/A1:2021 EN 61000-3-3:2013/A2:2021 FCC Class A VCCI-CISPR 32:2016 Class A BSMI (CNS 15936)
Immunity	IEC 61000-4-2/3/4/5/6/8/11 EN 55035:2017/A11:2020
Safety	UL (CSA 22.2 No 62368-1 & UL62368-1) CB (IEC/EN 62368-1) BSMI (CNS 15598-1)
Taiwan RoHS	CNS 15663

Warranty Information and Technical Support

Registering your product enables you to receive a more efficient warranty service. Be sure to register at www.edge-core.com.

快速入門指南

2.5G L2 網管型Ultra PoE++ 交換器
ECS4125-10P

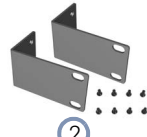
Edge-core®

www.edge-core.com

包裝內容物



①



②



③



④



⑤

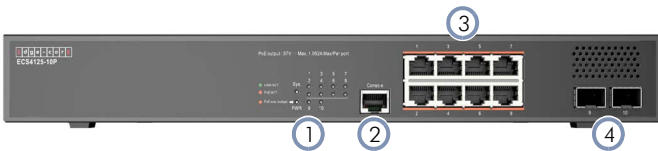


⑥

1. 2.5G L2 Ultra PoE++ 交換器
2. 機櫃安裝套件—2 個托架和 8 個螺絲
3. 電源線

4. 4 個自黏腳墊
5. 主控台纜線—RJ-45 到 DE-9
6. 文件 - 快速入門指南 (本文件) 及安全及法規資訊

簡介



①

②

③

④



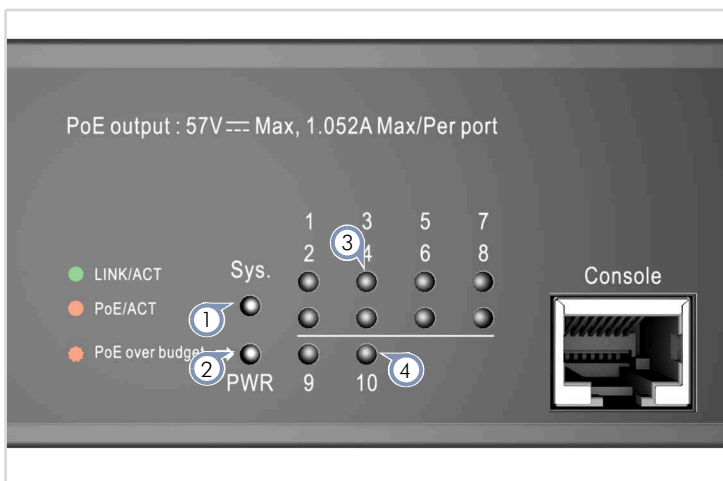
⑤

⑥

1. 系統 LED
2. 控制埠
3. 8 x 10/100/1G/2.5G RJ-45 PoE 連接埠
4. 2 x 1/10G SFP+ 連接埠

5. 接地螺絲
6. AC 電源插孔

系統/連接埠 LED



1. Sys: 綠色 (OK), 閃爍綠色 (開機中), 橘色 (故障)
2. PWR: 綠色 (OK), 橘色 (最大 PoE 功耗)
3. RJ-45 1G 連接埠: 綠色/閃爍 (連結/活動), 橘色 (PoE 連結)
4. SFP+ 10G 連接埠: 綠色 (10G), 橘色 (1G)

安裝

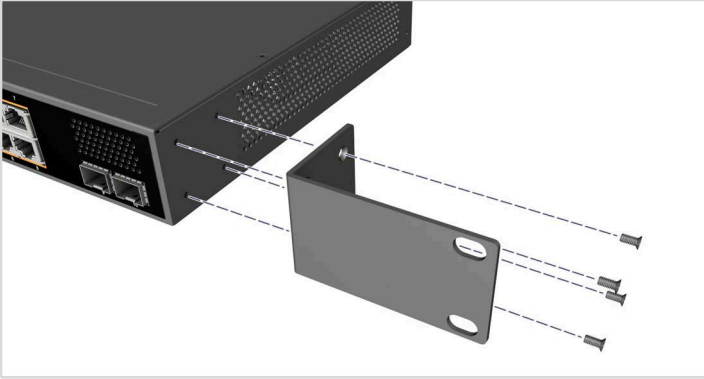


警告：為確保安全且可靠的安裝，請使用裝置隨附的配件與螺絲。使用其他來源的配件與螺絲可能導致配件損壞。使用未經許可配件所造成之損壞，不在保固範圍內。



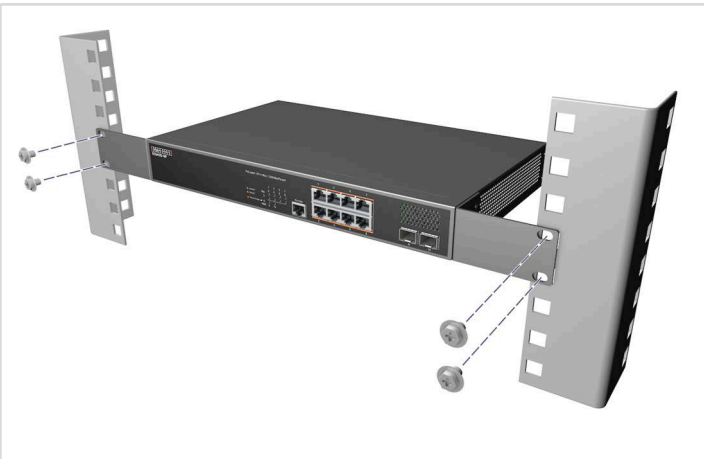
注釋：本文件中的示意圖僅供參考，可能與特定型號有所差異。

1 安裝設備



1. 安裝托架

使用內附的螺絲安裝托架。



2. 安裝設備

將設備裝到機櫃中並用機櫃螺絲固定。



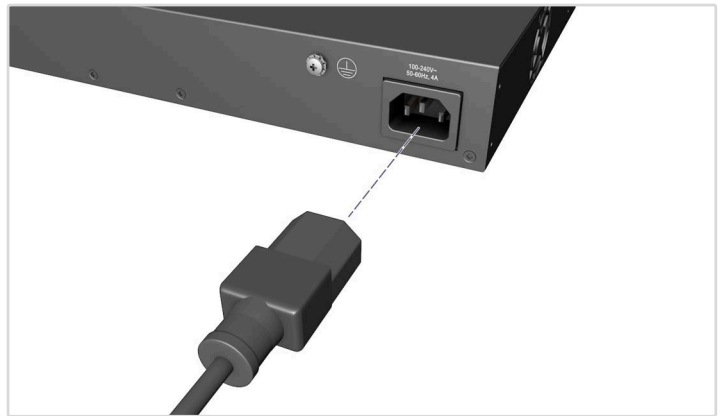
注釋：亦可利用內附之黏性橡膠腳墊，將此設備安裝在桌上或層架上。

2 將本裝置接地



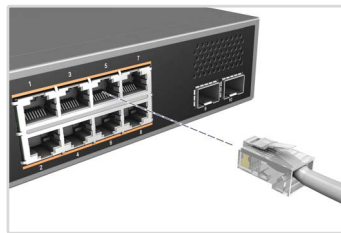
將凸耳 (未隨附) 連接 #18 AWG 最小接地線 (未隨附)，然後連接至設備後面板上的接地點。接下來，將接地線另一端連接至機櫃接地。

3 連接電源



將 AC 電源連接至 AC 電源插座。

4 進行網路連線



RJ-45 PoE 連接埠

連接纜線5e 類或以上的雙絞線。

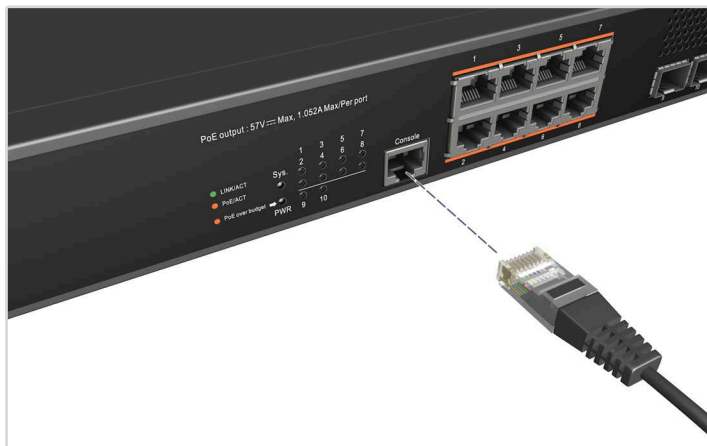
SFP+ 連接埠

安裝收發器，然後將光纖電纜連接至收發器連接埠。

SFP+ 連接埠支援下列收發器：

- 1000BASE-SX/LX/EX/ZX and 1000BASE-T (RJ-45)
- 10GBASE-SR/LR/ER/ZR

5 進行管理連接



RJ-45 控制埠

連接隨附的控制線，接著配置串列連接：115200 bps、8 個字元、無奇偶（檢驗碼）、1 個停止位元、8 個資料位元，並且無流量控制。

硬體規格

尺寸 (寬 x 深 x 高)	330 x 207.9 x 47.3 mm (12.99 x 8.19 x 1.86 in.)
重量	2.41 kg (5.31 lb)
溫度	操作：0° C 至 50° C (32° F 至 122° F) 儲存：-40° C 至 70° C (-40° F 至 158° F)
濕度	操作：10% 至 90% (無冷凝)
耗電量	最大 370 瓦
PoE 功耗	240 瓦
輸入電源 額定值	100-240 VAC, 50-60Hz, 4 A

符合法規

輻射	EN 55032:2015/A1:2020 EN IEC 61000-3-2:2019/A1:2021 EN 61000-3-3:2013/A2:2021 FCC Class A VCCI-CISPR 32:2016 Class A BSMI (CNS 15936)
耐受	IEC 61000-4-2/3/4/5/6/8/11 EN 55035:2017/A11:2020
安全性	UL (CSA 22.2 No 62368-1 & UL62368-1) CB (IEC/EN 62368-1) BSMI (CNS 15598-1)
臺灣 RoHS	CNS 15663

Warranty Information and Technical Support

Registering your product enables you to receive a more efficient warranty service. Be sure to register at www.edge-core.com.