

How to install drivers for the network adapter SMCWPCI-G2 in Microsoft Windows 7

SMCWPCI-G2

Summary: How to install drivers for the network adapter SMCWPCI-G2 in Microsoft Windows 7.

Equipment: SMCWPCI-G2



Index

Introduction.....	3
Drivers	3
Installing the driver.....	4
Troubleshooting.....	10

Introduction

This document explains how to install the Windows 7 driver for the wireless PCI network adapter SMCWPCI-G2.

Drivers

Before starting the installation of the driver, please first download the driver from the website of SMC Networks, **choosing Windows 7 Version**.

Direct Link: [SMC Website](#)

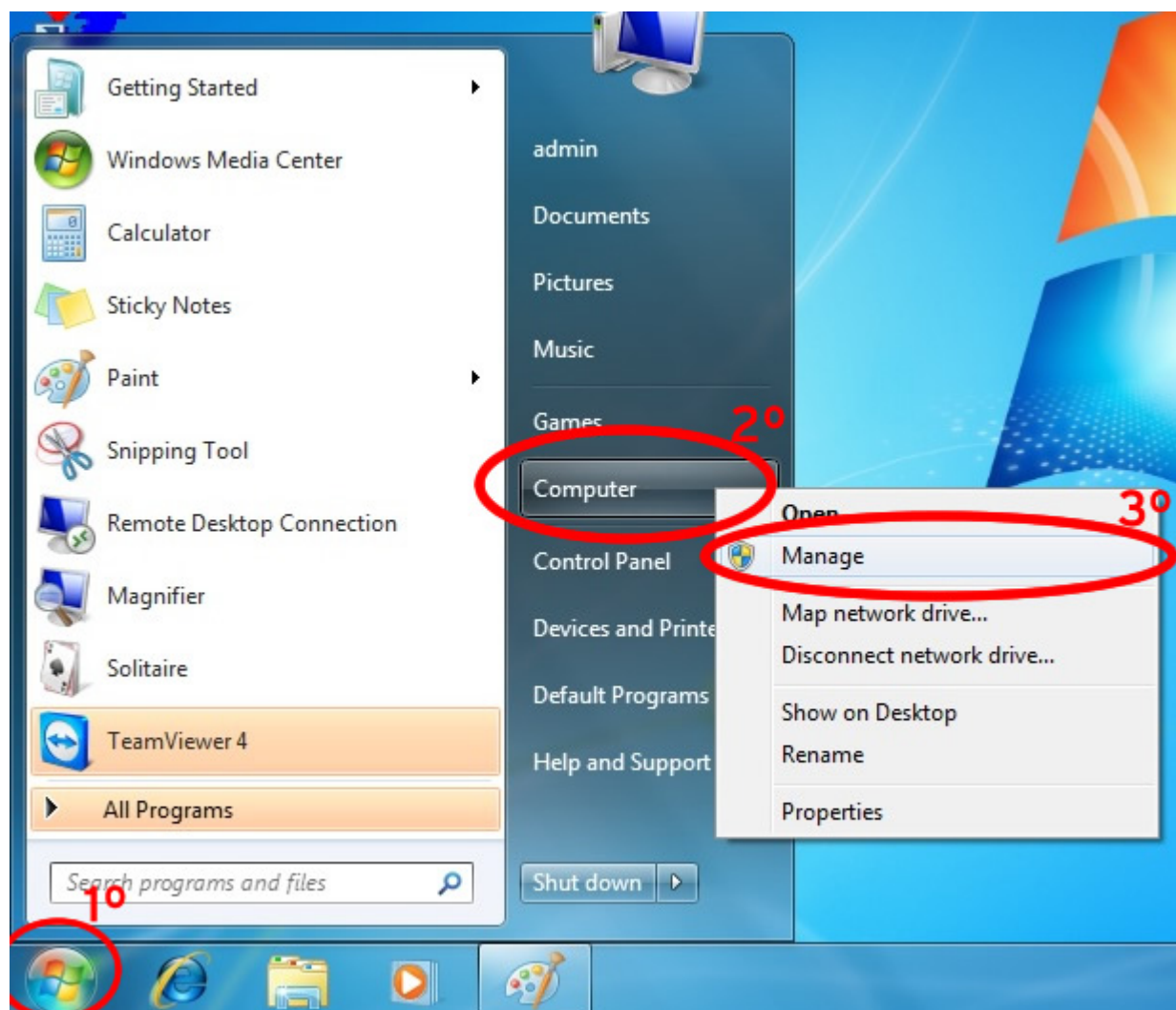
After downloading the archive please unzip it to folder of choice.

Installing the driver

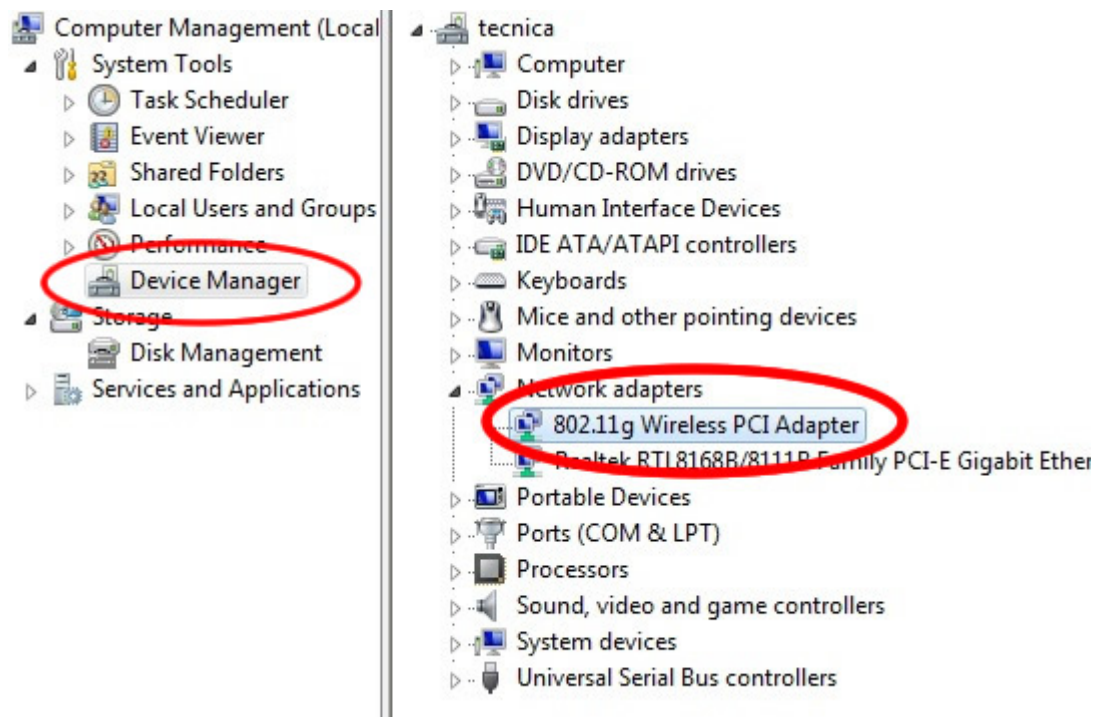
1st Step - To start the installation, insert the network adapter into a free PCI slot available on the computer. To check how to install a PCI card, please refer to the computer manual.

After inserting the new wireless PCI network adapter SMCWPCI-G2, turn on the computer. Microsoft Windows 7 will detect the new hardware, but it will not find a suitable driver.

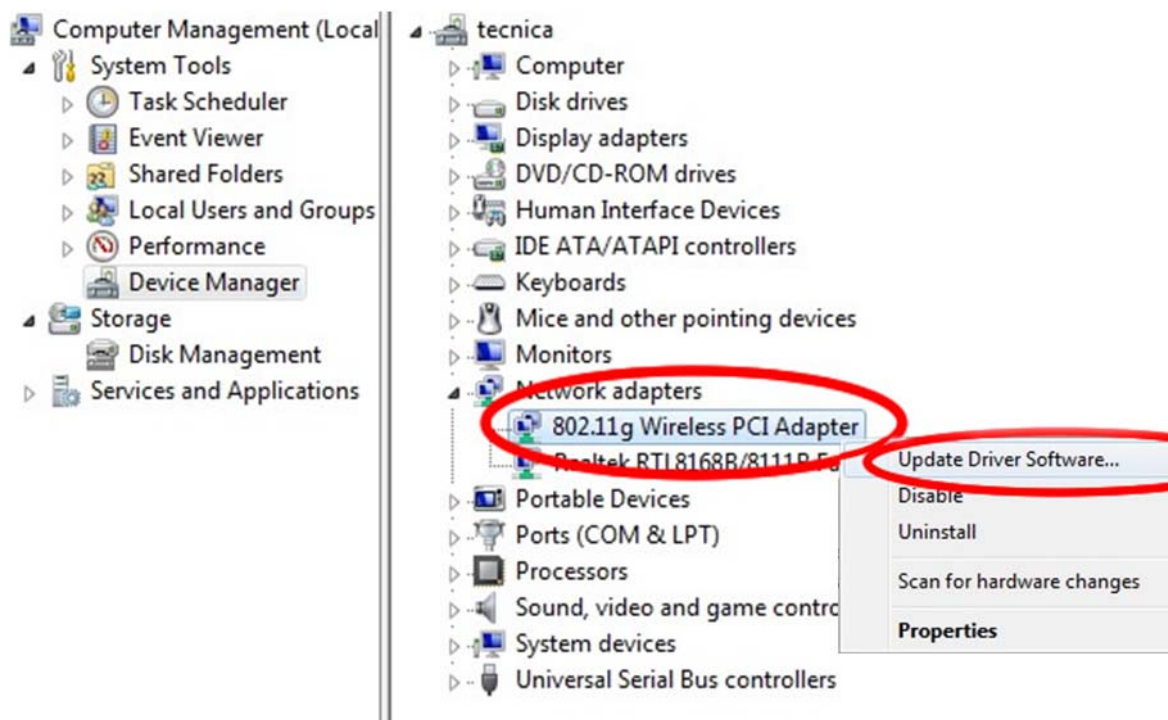
2nd Step - Press **Start** (Windows Logo), move the mouse to the **Computer** button, press the right mouse button and select **Manage**.



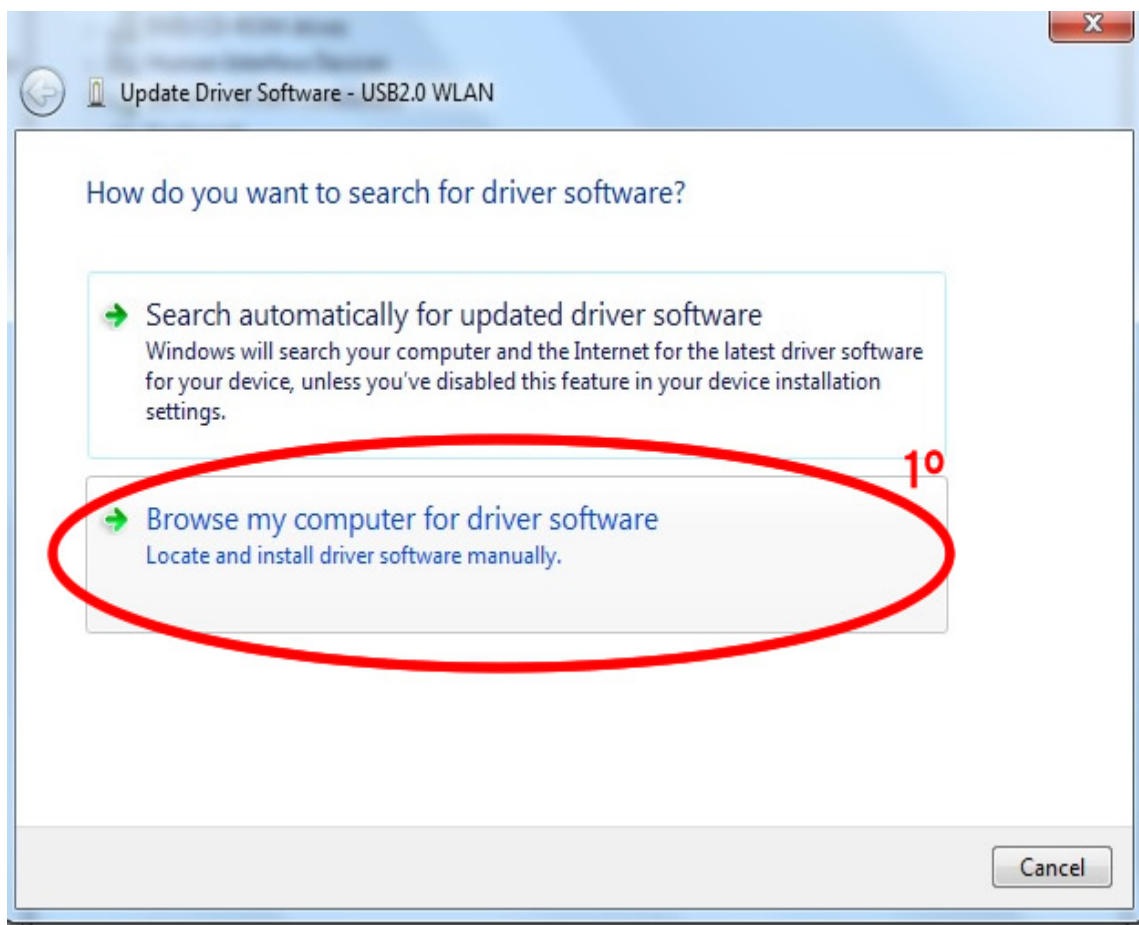
3rd Step - Then select Device Manager.



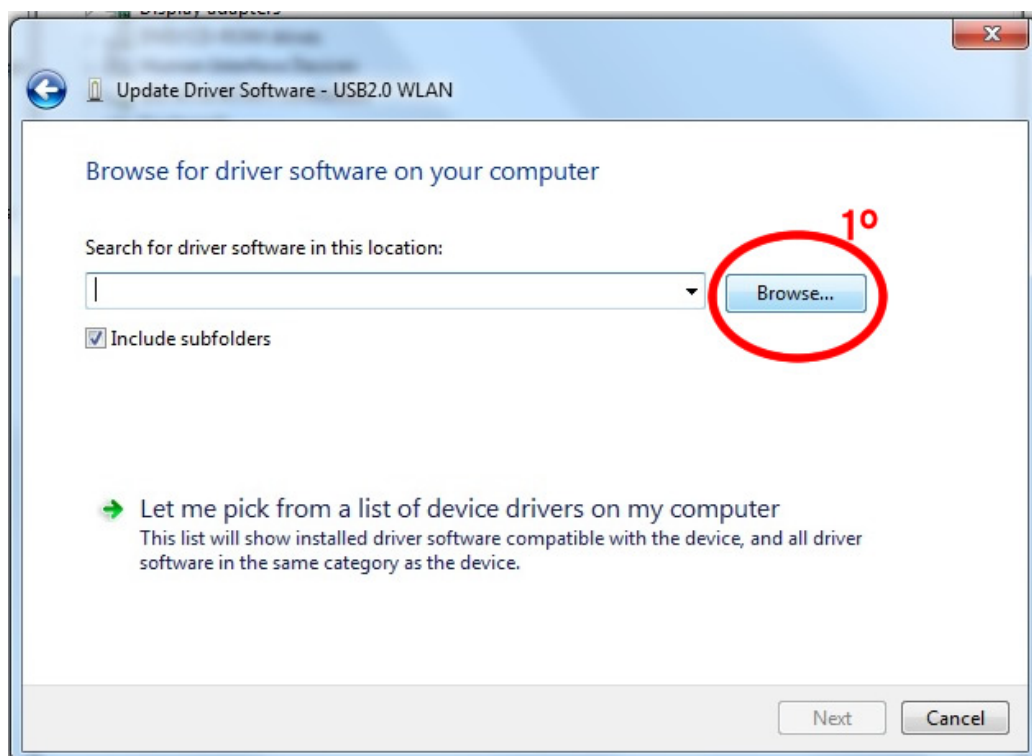
4th Step - Point the mouse cursor over the icon that appears in yellow, press the right mouse button and select **Update Driver Software**.



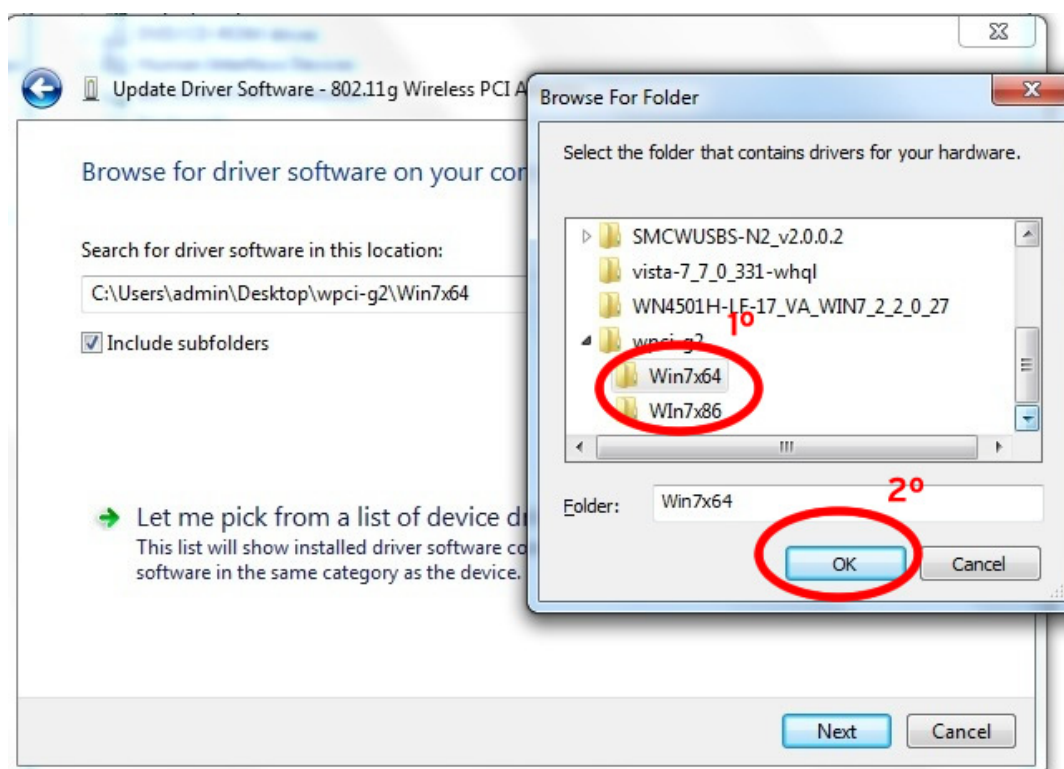
5th Step - Select the option Browse my computer for driver software.



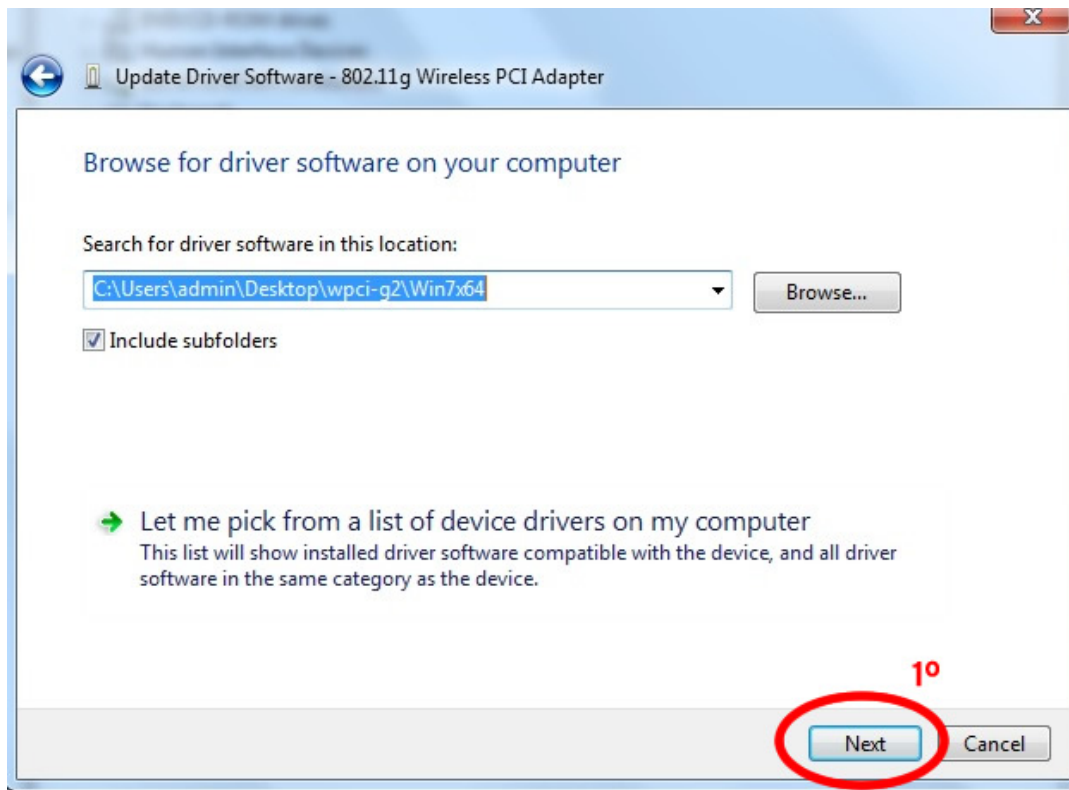
6th Step - Press the **Browse** button to search for the drivers.



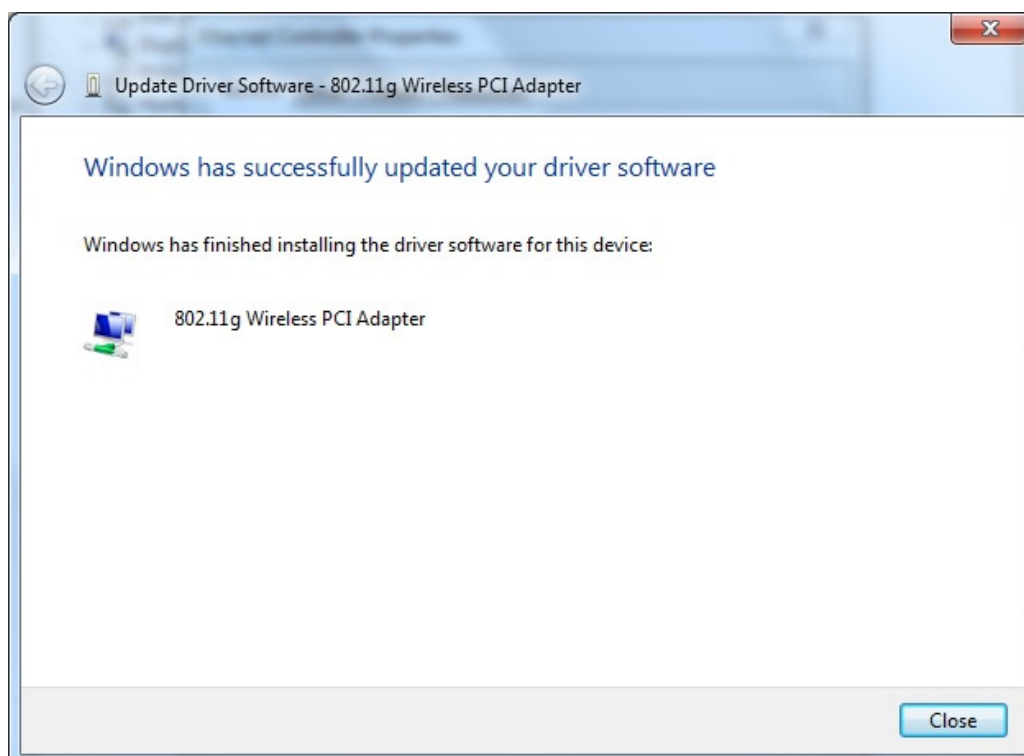
7th Step - Search the folder where the drivers are located (the one that the archive has been unzipped to).



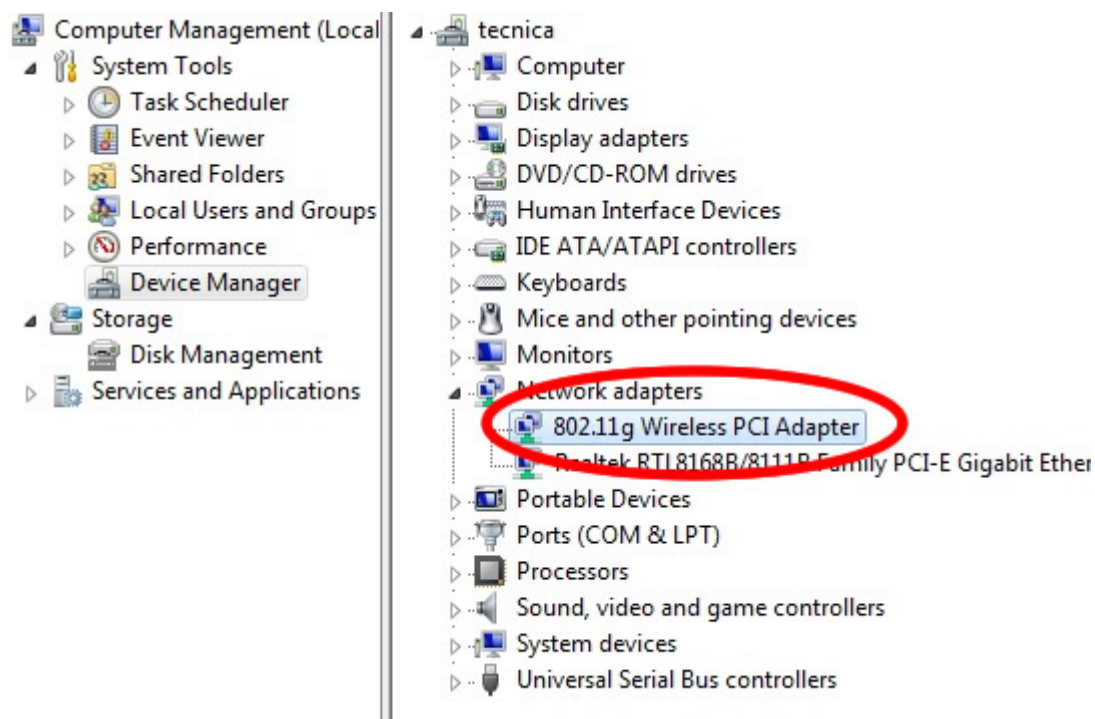
8th Step- After selecting the folder where the drivers are located press **Next**.



Windows 7 will now search for the correct drivers and if they were found a message similar to the one below will appear.



After the installation of the drivers, the list of the **Device Manager** will update automatically.



It is now possible to connect to a wireless network. To do that, go to network connections and double-click on the **Wireless Network connection** icon.



A window like the one below will appear with a list of available wireless networks.



Select the wireless network to connect to. If that network doesn't use encryption it will connect automatically. If it does use encryption (like WEP, WPA or WPA2), the system will ask for the encryption password.



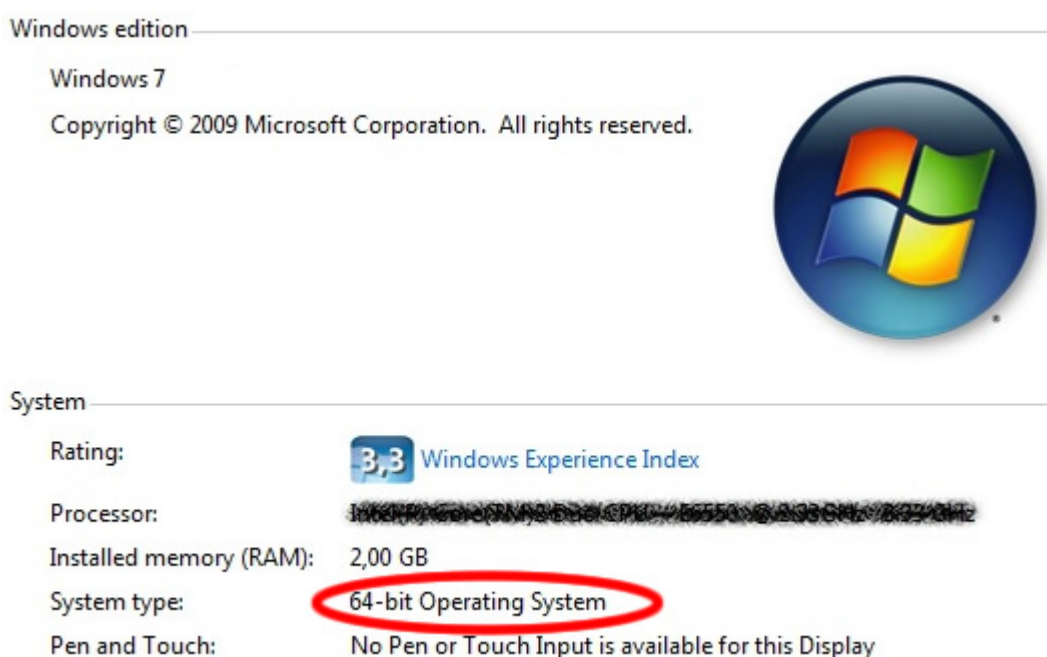
Wait for the system to connect to the network.



TroubleShooting

A. Drivers were not successfully installed:

- a. Check if you downloaded the correct drivers from the SMC website and selected the correct operating system.
- b. Check if in step 7 you chose the correct folder.
 - i. To verify your system processor architecture, check your computer properties (**Start -> Right Click Computer -> Properties**).



© Copyright 2009 SMC Networks. All rights reserved.

The information provided by SMC Networks is believed to be accurate and reliable.

However SMC Networks accepts no responsibility for the improper use of this information nor infringements to patents or the rights to third parties. SMC reserved the right to change product specifications and at any time without prior notice.

Microsoft product box shot(s) reprinted with permission from Microsoft Corporation.

Microsoft, Windows, Windows Vista and Windows 7 are either registered trademarks or trademarks of Microsoft Corporation in the United States and/or other countries..