

White Paper

ECView Pro Network Management System

ECView Pro Network Management System

Solution White Paper

ECView Pro Network Management System

TABLE OF CONTENTS

■ Executive Summary	3
■ The Importance of Network Management	4
■ Edge-Core Networks' ECView Pro Network Management System	5
■ Summary	9
■ About Edge-Core Networks	9

Solution White Paper

ECView Pro Network Management System

Powered by ECVIEW



EXECUTIVE SUMMARY

Effective and far-sighted management of enterprise network infrastructure is a requirement for business viability today. Because of the increasingly critical role IT plays in business success, the enterprises/business owner must carefully manage investments in network infrastructure to ensure optimal return on investment and total cost of ownership.

Network management systems have come to play a key part in maximizing the business and operational benefits of an enterprise network. Edge-Core Networks specializes in the development and deployment of solutions that meet the continuously evolving needs of business and IT enterprises. The ECView Pro product suite, built on the powerful ECVIEW Platform, provides a sophisticated plug-in architecture that ensures transparent integration of all components and products.

The ECView Pro Network Management System meets current and future technology challenges with business practicality. ECView Pro provides a single point to manage your entire enterprise network, together with an unlimited and customizable reporting capability. Positioned for future growth, ECView Pro is extendable to allow management of other enterprise functions, such as traffic analysis, wireless management, and security.

Solution White Paper

ECView Pro Network Management System

THE IMPORTANCE OF NETWORK MANAGEMENT

If its network fails, a business suffers. Moreover, if the network cannot adapt to continuously evolving new technologies, the business also suffers.

Companies have come to rely on IT networks to facilitate communication and collaboration among their employees, partners, customers, and vendors. The availability and performance of IT networks have a direct impact on a business's capacity to generate revenue, minimize expenses, and compete more effectively through improved productivity and instant access to

The availability and performance of IT networks have a direct impact on a business's capacity to generate revenue, minimize expenses, and compete more effectively through improved productivity and instant access to critical information and applications.

critical information and applications. As technology continues to evolve, more and more application solutions assume enterprise network connectivity. To take advantage of such solutions—which must be adopted to maintain market position or gain a competitive advantage—a company/organization must have a reliable, robust, and effective network.

An enterprise network management system manages an infrastructure comprised of network elements from multiple vendors. The platform receives and processes events from elements in the network and is the main console for detecting faults in network infrastructure. In brief, network management:

- Ensures ongoing access to your business from external stakeholders.
- Automates routine tasks. Allows IT staff to focus more on business mission-critical tasks.
- Reduces downtime by proactively monitoring network hardware.
- Helps maintain productivity levels and smooth operational workflows.
- Saves money through better control, configuration, and usage.
- Lowers total cost of ownership (TCO) of the network.
- Provides auditing for configuration change management.

The key role of a network management platform is monitoring and reporting network issues every day, 24x7x365 days. The platform monitors and manages how network devices are being utilized, and has the ability to generate and transmit alarms based upon specific circumstances, which enables staff to focus attention on specific issues. An events viewer allows IT field staff to directly monitor devices, resulting in call reductions to the central help desk.

Solution White Paper

ECView Pro Network Management System

EDGE-CORE NETWORKS' ECView Pro NETWORK MANAGEMENT SYSTEM

Edge-Core Networks' ECView Pro Network Management System (NMS) is part of a new generation of proactive management tools. Incorporating the most up-to-date technologies, ECView Pro is an agile and flexible platform that can readily adapt to the increasing complexity and size of an expanding network. With the reliable, robust, and flexible ECView Platform as its foundation, ECView Pro configures and monitors active network devices, firewalls, servers, databases, and enterprise software.

ECView Pro was designed from scratch, so that developers were able to incorporate proven usability features that make it highly user friendly. The result is a feature-rich, powerful application that is simple to use, which makes the task of managing a large and complex network environment more efficient.

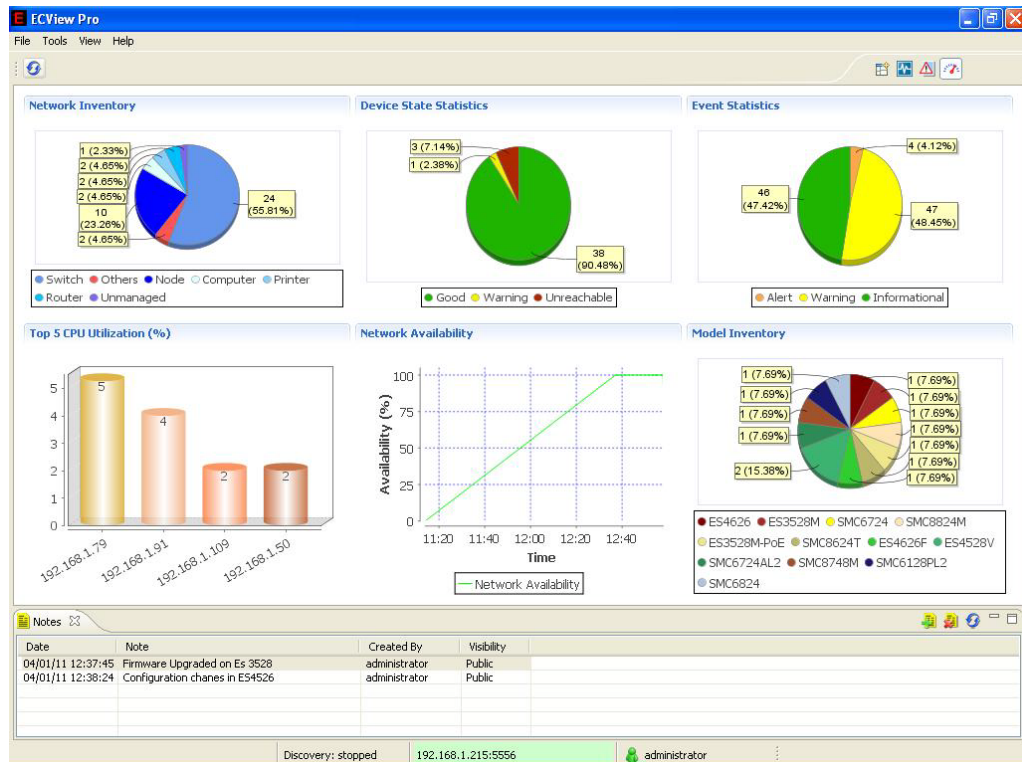
Ease of use is an important consideration in applications, especially when it comes to operation of a complex system such as an NMS. ECView Pro was designed from

scratch, so that developers were able to incorporate proven usability features that make it highly user friendly. The result is a feature-rich, powerful application that is simple to use, which makes the task of managing a large and complex network environment more efficient.

Key ECView Pro NMS features include:

Unified Management Platform

A single point to manage your entire enterprise. Extendable for future growth to manage other aspects of your enterprise, such as traffic analysis, wireless management, security, and more.



Solution White Paper

ECView Pro Network Management System

Events

Device trap receiver filters can sort or define custom severity levels. A basic correlation engine with action triggers can launch email, or send traps to other systems.

The ECView Network Mapping System is a mapping tool that provides visualization of physical network topology and passively monitors and displays the state of network devices.

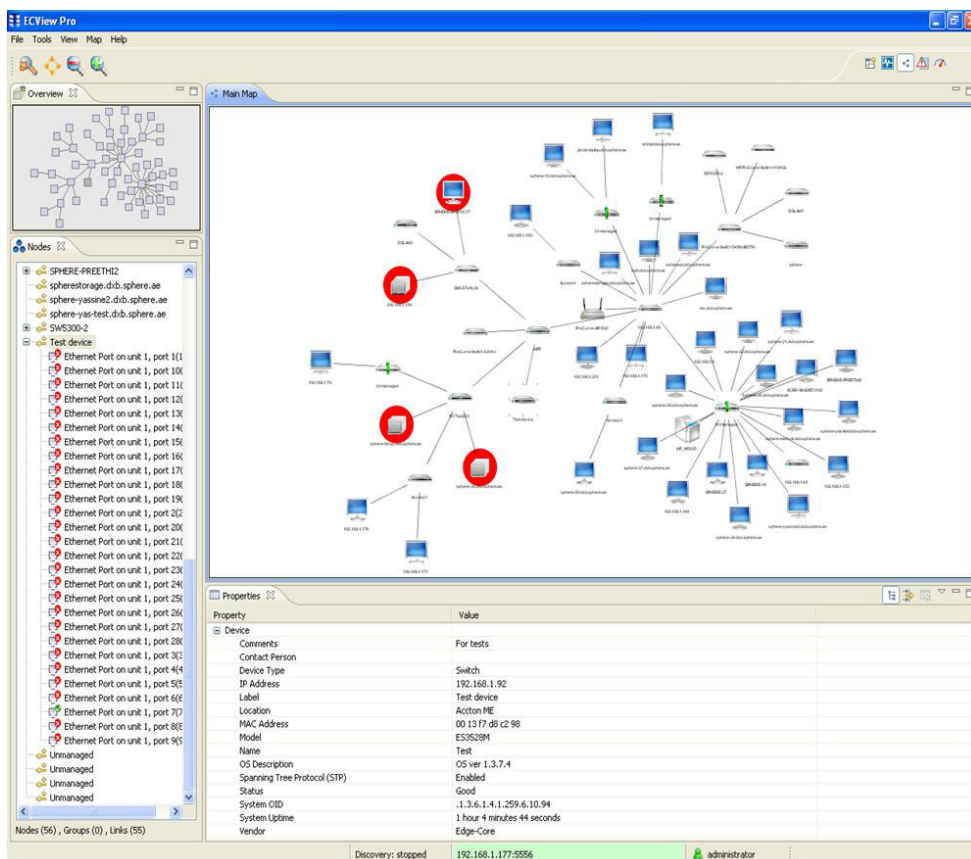
Discovery

By using the discovery protocols LLDP, CDP, FDP, EDP, NDP, and ECView Bridge algorithm, ECView Pro provides full support for true topology within a mixed-vendor environment.

- Auto discovery; supporting Cisco Discovery Protocol (CDP), Foundry Discovery Protocol, Nortel Discovery Protocol, Extreme Discovery Protocol, and IPV6 NDP.
- Link Layer Discovery Protocol (LLDP): LLDP is a standard method for discovering Ethernet network devices, such as switches, routers, and wireless network access points.
- ECView Bridge: Edge-Core's proprietary algorithm for discovering unmanaged network devices.

Mapping

The ECView Network Mapping System is a mapping tool that provides visualization of physical network topology and passively monitors and displays the state of network devices.



Solution White Paper

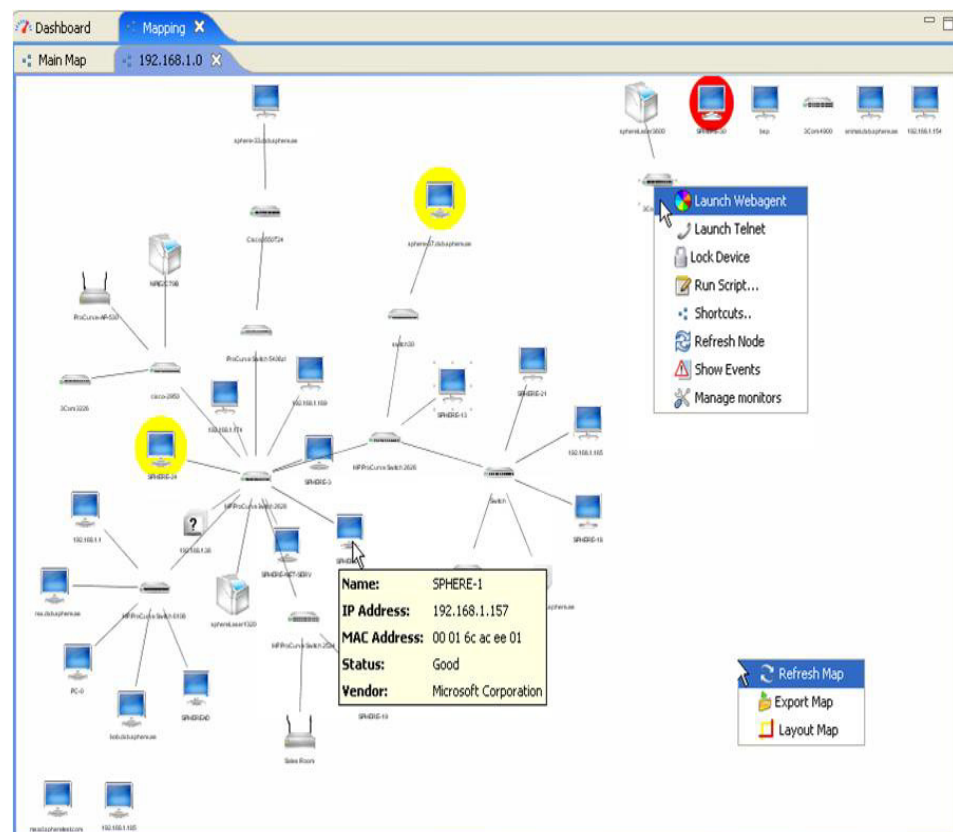
ECView Pro Network Management System

- Node finder that quickly finds a specific device by IP, MAC, name etc.
- Utilizes the market leader in visualization libraries.
- Predefined mapping layouts, such as organic, hierarchical, circular etc.
- Provides a clean and accurate representation of the network and device status.
- Drill-down feature from network topology to management of a device.
- Useful right-click actions for CLI, web, traps etc.

Reporting

Unlimited reporting capability to design reports from data gathered by ECView Pro using tables, charts, or any graphics customized for your individual use.

- Generate live customizable reports based on network information.
- Pre-shipped device- and network-based reports for network inventory, network availability, device report, historical device status report etc. Generate PDF or HTML format reports.
- Report Designer tool to create new reports and modify pre-shipped reports. A feature-rich, drag-and-drop tool.



Asset Manager

Asset Manager provides functionality to plan and view complete network inventory based on different criteria.

- Predefined group categories provide easy-to-use functionality to list devices accordingly.

Solution White Paper

ECView Pro Network Management System

- Custom groups can be created using different criteria, such as vendor.
- Check real-time FDB and ARP entries along with detailed interface statistics.

Configuration Manager

List devices, group them, download/upload firmware and different configurations (running and startup), compare against baselines, and track by revision number. Show history of all configuration changes over time.

- Compare between two different configuration files with different revision numbers, or with a baseline file.
- All changes to configuration files are audited. It is simple to check who made any change and when they made it.
- A MIB browser allows monitoring and management of any SNMP device attached to the network.

Designing ECView Pro from scratch using the Eclipse framework allowed the development of a user-friendly application that makes the task of managing a large, mixed environment trivial, yet powerful.

Active Monitor

Proactive monitoring system. Continuously monitors your network devices, enables you to forecast any network problem that may occur, alert users to any potential network problem, and help reduce downtime and operating costs.

Create customized monitors or use RMON monitors with varying thresholds: critical,

major, minor. Schedule monitors and device polling times. Results may be sent as SNMP traps or emailed as alerts.

Ease of Use

Designing ECView Pro from scratch using the Eclipse framework allowed the development of a user-friendly application that makes the task of managing a large, mixed environment trivial, yet powerful.

Reaction Time

Using the variable polling system, event notifications, and active monitoring system, results in reduced reaction times when finding problems in the network that may cause millions of dollars in damage to the enterprise if not immediately addressed. This reaction can vary from sending an email to the administrator, to dynamic reprogramming of the network's active components.

Investment Protection with Unmatched Expandability

ECView Pro has a modular platform that caters to current and future needs. Edge-Core Networks' R&D is hard at work to release functionality that covers the complete spectrum of IT requirements, such as security, wireless, help desk, and others. These components will integrate seamlessly, with minimum impact on your enterprise.

Solution White Paper

ECView Pro Network Management System

SUMMARY

Now is the time to rethink your network. With lower priced switches, developments in wireless and voice, and the emergence of full-duplex technologies and shared-bandwidth, companies now have a wide variety of options to develop more capacity (and complexity) than ever. The challenge lies in keeping this new generation of super-networks up and running at lower cost.

ECView Pro has a number of features and capabilities that set it apart from the competition. These features, based on the Edge-Core Networks commitment to scalability and security, support a higher ROI and long-term business value.

Edge-Core Networks ECView Pro NMS is the best option available today to monitor and control your network, and to assist you with effective planning, tracking, and controlling changes to network software and hardware. With unparalleled flexibility, scalability, and extendibility, ECView Pro NMS is the wise choice to ensure optimum business and IT management of the enterprise network.

ABOUT EDGE-CORE NETWORKS

Based in Taiwan, Edge-Core Networks Inc. was established to introduce groundbreaking technology and set new standards in enterprise network switching and network management solutions. Edge-Core serves a global market by providing network solutions to enterprises, carriers, and campuses.

The Edge-Core Networks ECView Pro NMS focus is on state-of-the-art technology that is capable of managing small networks, yet able to scale to manage thousands of nodes with ease. As a result, solutions can easily grow with the customer's needs without sacrificing previous technology and training investments.

The Edge-Core Networks commitment to groundbreaking technology is ongoing. Today our R&D lab is designing and developing next-generation solutions in areas such as switching, security, traffic management, wireless management, and enterprise voice.

Solution White Paper

ECView Pro Network Management System



**Contact your local Edge-Core
Solutions Provider, or call**

Edge-Core at :

+886-3-563-8888

Edge-Core

1, Creation Rd 3, Hsinchu Science Park,
Hsinchu, 30077, Taiwan, R.O.C.

www.edge-core.com

EC-WHP-0311-01