

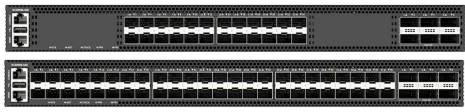
# Quick Start Guide

10GE Ethernet Switch  
ECS5550-30X | ECS5550-54X



www.edge-core.com

## Package Contents



1



2



3



4



5

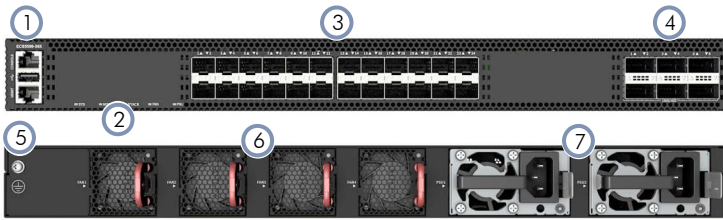


6

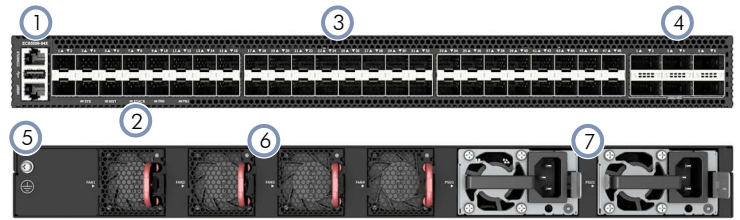
1. 10GE Ethernet Switch ECS5550-30X or ECS5550-54X
2. Rack mounting kit—2 front-post brackets, 2 rear-post brackets, and 16 screws
3. AC power cord

4. Console cable—RJ-45 to DE-9
5. Grounding wire
6. Documentation—*Quick Start Guide* (this document) and *Safety and Regulatory Information*

## Overview

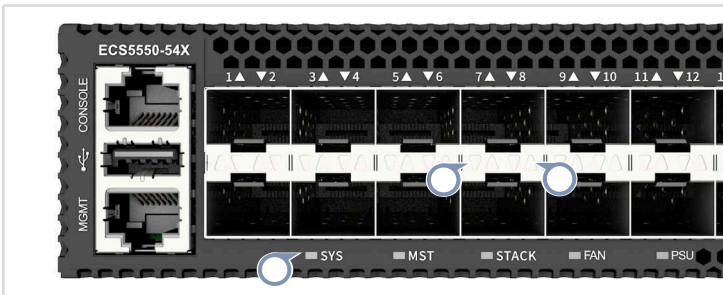


1. Management Ports: 1000BASE-T RJ-45, RJ-45 console, USB
2. System LEDs
3. 24 or 48 x 10G SFP+ ports
4. 6 x 100G QSFP28 ports

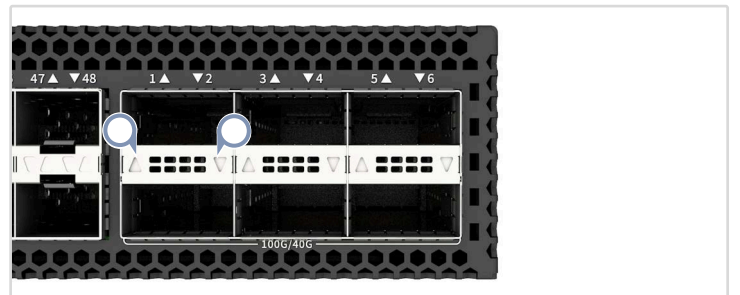


5. Grounding screw (maximum torque 10 kgf-cm (8.7 lb-in))
6. 4 x fan trays
7. 2 x AC PSUs

## System LEDs/Buttons

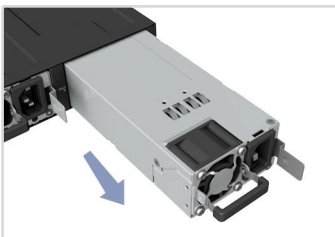


- SYS:** Green (OK), Flashing Green (booting), Yellow (fault)  
**MST:** Green (stack master)  
**STACK:** Green (stack mode)  
**FAN:** Green (OK), Yellow (fault)  
**PSU:** Green (OK), Yellow (fault)



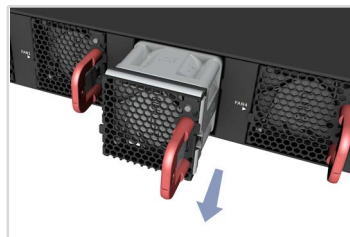
- SFP+ 10G LEDs:** Green (10G), Orange (1G or 2.5G)  
**QSFP28 LEDs:** Green (100G or 40G)

## FRU Replacement



### PSU Replacement

1. Remove the power cord.
2. Press the release latch and remove the PSU.
3. Install replacement PSU with matching airflow direction.



### Fan Tray Replacement

1. Press the release latch in the fan tray handle.
2. Remove fan tray from the chassis.
3. Install replacement fan with matching airflow direction.



\* 1 5 0 2 0 0 0 2 6 9 9 H R 0 1 \*

## Installation



**Warning:** For a safe and reliable installation, use only the accessories and screws provided with the device. Use of other accessories and screws could result in damage to the unit. Any damages incurred by using unapproved accessories are not covered by the warranty.

**Avertissement:** Pour une installation sûre et fiable, utilisez uniquement les accessoires et les vis fournies avec l'appareil. L'utilisation d'autres accessoires et vis pourrait endommager l'appareil. Les dommages causés par l'utilisation d'accessoires non approuvés ne sont pas couverts par la garantie.



**Caution:** The device includes plug-in power supply (PSU) and fan tray modules that are installed into its chassis. Make sure all installed modules have a matching airflow direction.

**Attention:** L'appareil comprend des modules d'alimentation et de modules de ventilation installés dans son châssis. Assurez-vous que tous les modules installés ont une direction d'air adaptée.



**Note:** The device has the Open Network Install Environment (ONIE) software installer preloaded, but no device software image. Information about compatible software can be found at [www.edge-core.com](http://www.edge-core.com).

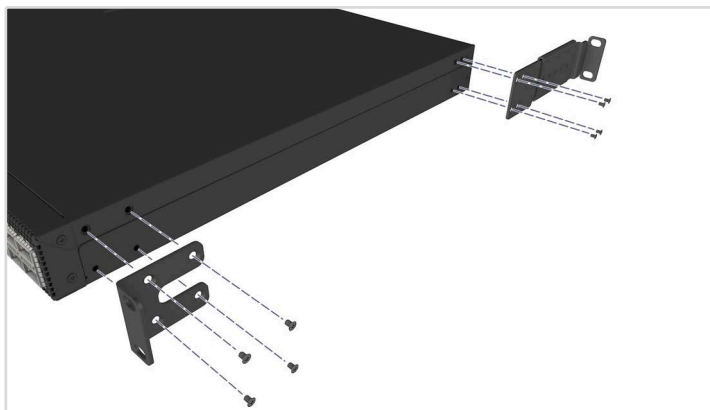
**Note:** The drawings in this document are for illustration only and may not match your particular model.

## 1 Mount the Device



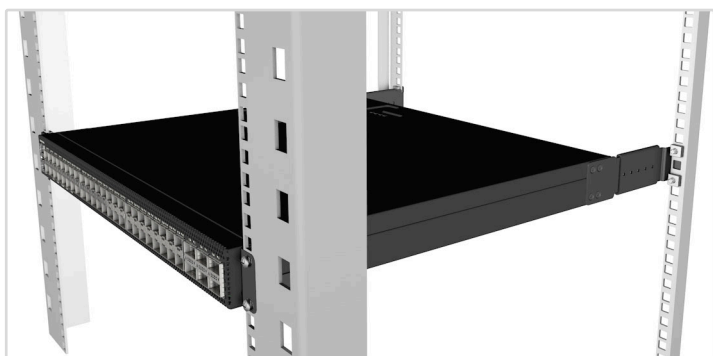
**Caution:** This device must be installed in a telecommunications room or a server room where only qualified personnel have access.

**Attention:** Cet appareil doit être installé dans une salle de télécommunications ou une salle de serveurs où seul le personnel qualifié a accès.



### 1. Attach the Brackets

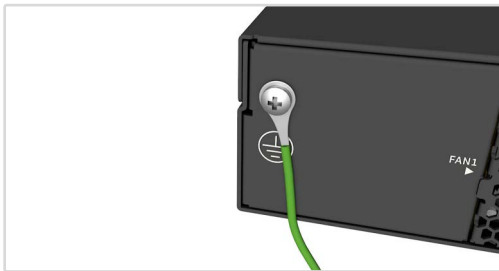
Use the included screws to attach the front- and rear-post brackets.



### 2. Mount the Device

Mount the device in the rack and secure it with rack screws.

## 2 Ground the Device



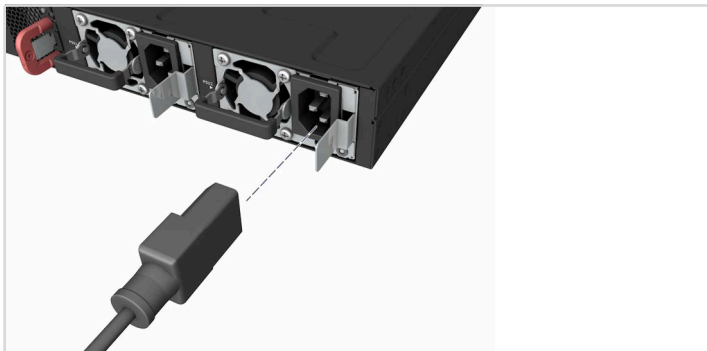
### Verify Rack Ground

Ensure the rack is properly grounded and in compliance with international and local standards. Verify that there is a good electrical connection to the grounding point on the rack (no paint or isolating surface treatment).

### Attach Grounding Wire

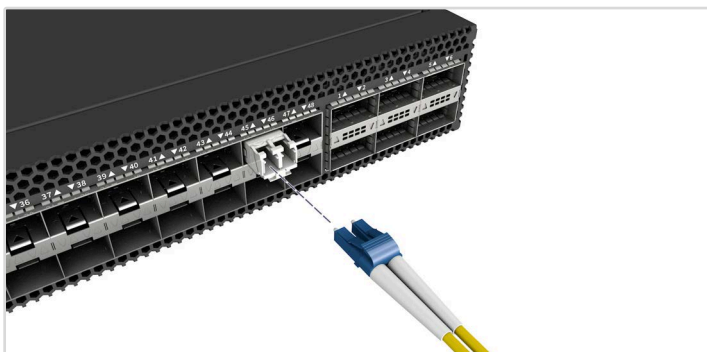
Attach the included grounding wire to the grounding point on the device rear panel. Then connect the other end of the wire to rack ground.

## 3 Connect Power



Install one or two AC PSUs and connect them to an AC power source.

## 4 Make Network Connections

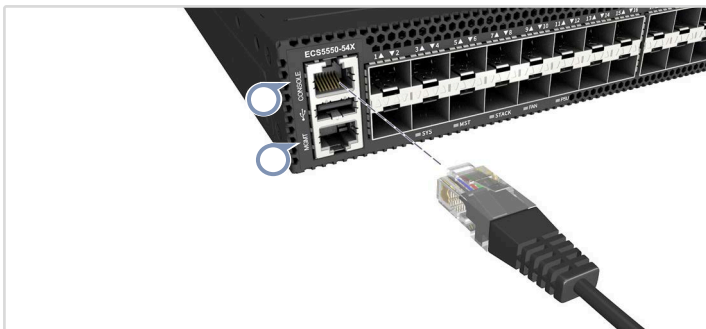


### 10G SFP+ and 100G QSFP28 Ports

Install transceivers and then connect fiber optic cabling to the transceiver ports.

Alternatively, connect DAC or AOC cables directly to the slots.

## 5 Make Management Connections



### 10/100/1000M RJ-45 Management Port

Connect Cat. 5e or better twisted-pair cable.

### RJ-45 Console Port

Connect the included console cable to a PC running terminal emulator software and then configure the serial connection: 115200 bps, 8 characters, no parity, one stop bit, 8 data bits, and no flow control.

Console cable pinouts and wiring:

Device's RJ-45 Console	Null Modem	PC's 9-Pin DTE Port
6 RXD (receive data)	<-----	3 TXD (transmit data)
3 TXD (transmit data)	----->	2 RXD (receive data)
4,5 SGND (signal ground)	-----	5 SGND (signal ground)

## Hardware Specifications

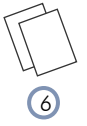
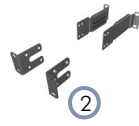
### Switch Chassis

Size (WxDxH)	442 x 420 x 44 mm (17.4 x 16.54 x 1.73 in.)
Weight	ECS5550-30X: 8.8 kg (19.4 lb), with 2 PSUs and 4 fans installed ECS5550-54X: 8.86 kg (19.53 lb), with 2 PSUs and 4 fans installed
Temperature	Operating: 0° C to 45° C (32° F to 113° F) Storage: -40° C to 70° C (-40° F to 158° F)
Humidity	Operating: 5% to 95% (non-condensing)
Input Power Rating	100–240 VAC, 50/60 Hz, 7 A per power supply

### Regulatory Compliances

Emissions	EN 55032 Class A EN 61000-3-2 EN 61000-3-3 CNS 15936 Class A VCCI-CISPR 32 Class A AS/NZS CISPR 32 Class A ICES-003 Issue 7 Class A FCC Class A
Immunity	EN 55035 IEC 61000-4-2/3/4/5/6/8/11
Safety	UL (CSA 22.2 No 62368-1 & UL62368-1) CB (IEC/EN 62368-1) CNS15598-1

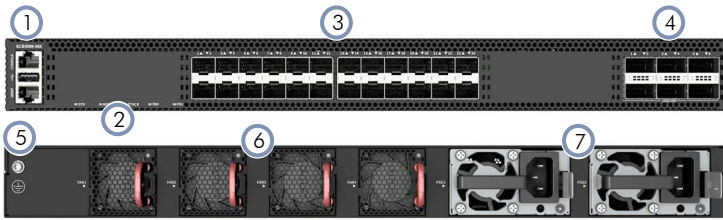
### 包裝內容物



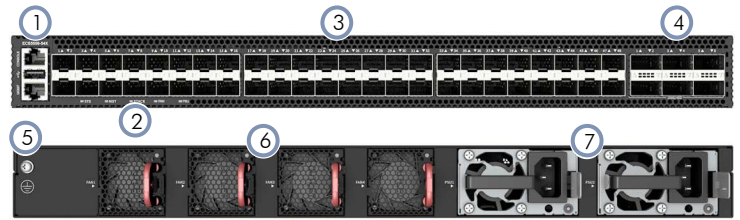
1. 10GE 乙太網路交換器 ECS5550-30X 或 ECS5550-54X
2. 機櫃安裝套件 — 2 個前柱托架、2 個後柱托架和 16 個螺絲
3. AC 電源線

4. 主控台纜線 — RJ-45 到 DE-9
5. 接地線
6. 文件 - 快速入門指南 (本文件) 及安全及法規資訊

### 簡介

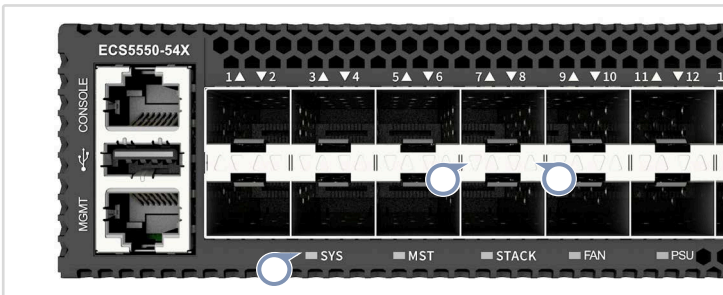


1. 管理埠：1000BASE-T RJ-45 · RJ-45 控制埠 · USB
2. 系統 LED
3. 24 或 48 x 10G SFP+ 連接埠



4. 6 x 100G QSFP28 連接埠
5. 接地螺絲 (最大扭力 10 kgf-cm (8.7 lb-in))
6. 4 x 風扇托盤
7. 2 x AC PSU

### 系統LED / 按鈕

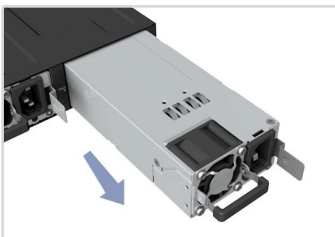


- SYS**：綠燈 (OK) · 閃爍綠燈 (正在開機) · 黃燈 (故障)  
**MST**：綠燈 (主要堆疊)  
**STACK**：綠燈 (堆疊模式)  
**FAN**：綠燈 (OK) · 黃燈 (故障)  
**PSU**：綠燈 (OK) · 黃燈 (故障)



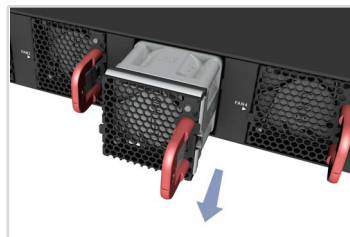
- SFP+ 10G LED**：綠燈 (10G) · 橘燈 (1G 或 2.5G)  
**QSFP28 LED**：綠燈 (100G 或 40G)

### 更換 FRU



#### 更換 PSU

1. 取下電源線。
2. 按住釋放桿並取出 PSU。
3. 安裝氣流方向相符的替換 PSU。



#### 更換風扇托盤

1. 按壓風扇托盤把手中的釋放鎖。
2. 從機殼內取出風扇托盤。
3. 安裝氣流方向相符的替換風扇。

## 安裝



**警告：**為確保安全且可靠的安裝，請使用裝置隨附的配件與螺絲。使用其他來源的配件與螺絲可能導致配件損壞。使用未經許可配件所造成之損壞，不在保固範圍內。



**注意：**裝置包含安裝在機箱中的插入式電源供應器 (PSU) 和風扇托盤模組。確定所有已安裝之模組氣流方向一致。

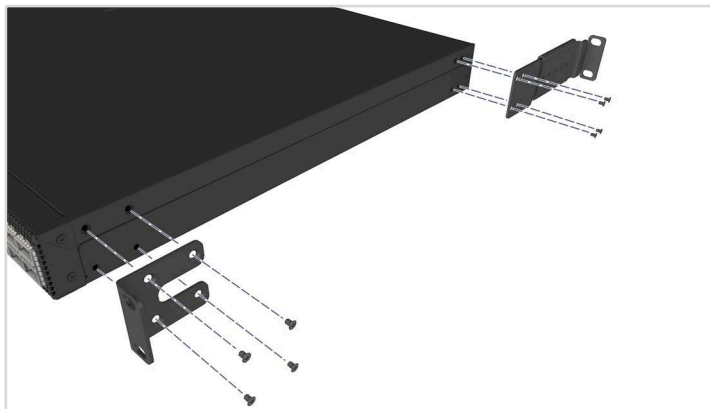


**附註：**本裝置預先安裝了「開放網路安裝環境 (Open Network Install Environment, ONIE)」軟體安裝程式，但沒有裝置軟體圖示。關於相容軟體的資訊，可上此網站：[www.edge-core.com](http://www.edge-core.com)。

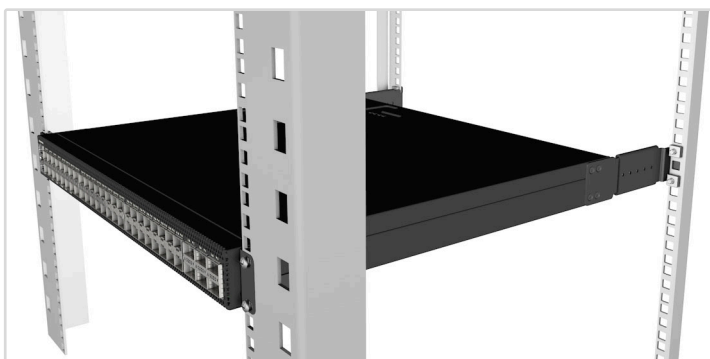
**附註：**本文件中的示意圖僅供參考，可能與特定型號有所差異。

**1 安裝裝置**

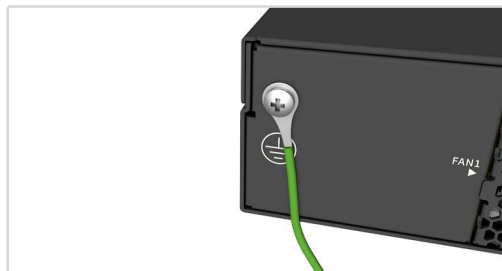
**注意：**本設備請安裝於僅限合格人員有權進入的通訊機房或伺服器機房。

**1. 安裝托架**

使用內附的螺絲安裝前柱及後柱托架。

**2. 安裝裝置**

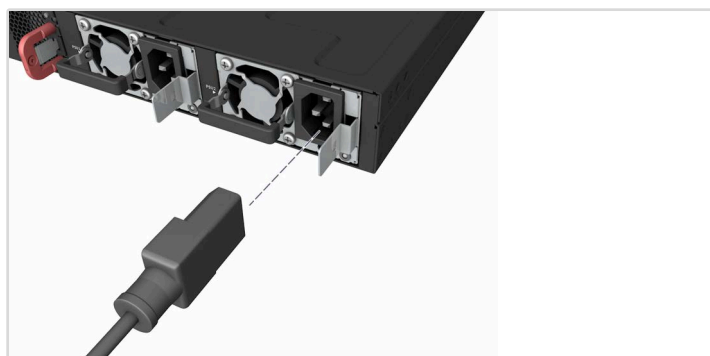
將裝置裝到機櫃中並用機櫃螺絲固定。

**2 將裝置接地****確認機架接地**

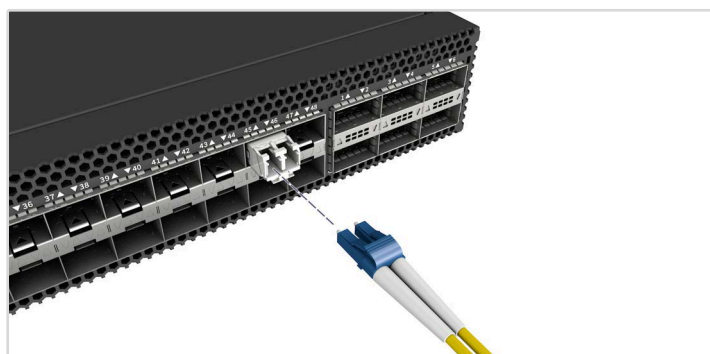
請確保機櫃正確接地，並符合國際與當地標準。確認與機櫃接地點間有良好的電氣連接性（無油漆或絕緣表面處理）。

**安裝接地線**

將隨附接地線安裝在裝置後面板的接地點上。接下來，將接地線另一端連接至機櫃接地。

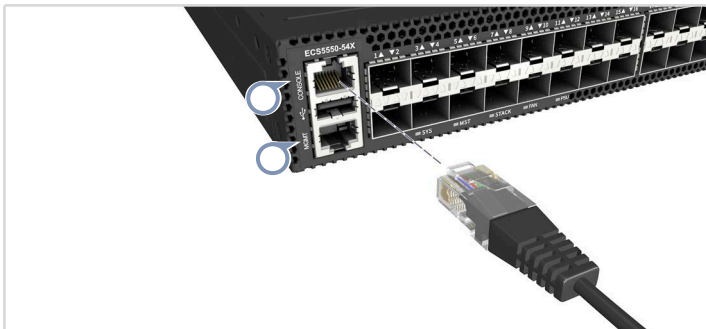
**3 連接電源**

安裝一個或兩個 AC PSU 並將其連接至 AC 電源。

**4 進行網路連線****10G SFP+ 和 100G QSFP28 連接埠**

安裝收發器，然後將光纖電纜連接至收發器連接埠。或者直接連接 DAC 或 AOC 纜線至插槽。

## 5 進行管理連接



**10/100/1000M RJ-45 管理埠**  
連接纜線 5e 類或以上的雙絞線。

### RJ-45 控制埠

連接隨附的控制埠纜線至執行終端模擬器軟體的 PC，接著配置串列連接：115200 bps、8 個字元、無奇偶（檢驗碼）、1 個停止位元、8 個資料位元，並且無流量控制。

主控台纜線接腳輸出及配線：

裝置的 RJ-45 主控台	虛擬數據機	電腦 9 接腳 DTE 連接埠
6 RXD (接收資料)	<-----	3 TXD (傳送資料)
3 TXD (傳送資料)	----->	2 RXD (接收資料)
4,5 SGND (訊號接地)	-----	5 SGND (訊號接地)

## 硬體規格

### 交換器機箱

尺寸 (寬 x 深 x 高) 442 x 420 x 44 毫米 (17.4 x 16.54 x 1.73 英吋)

重量 ECS5550-30X : 8.8 kg (19.4 lb) · 安裝 2 個 PSU 及 4 個風扇  
ECS5550-54X : 8.86 kg (19.53 lb) · 安裝 2 個 PSU 及 4 個風扇

溫度 操作 : 0° C 至 45° C ( 32° F 至 113° F )  
存放 : -40° C 至 70° C ( -40° F 至 158° F )

濕度 操作 : 5% 至 95% ( 非冷凝 )

輸入電源 額定值 每組電源 100–240 VAC · 50/60 Hz · 7 A

### 法規符合性

放射 EN 55032 Class A  
EN 61000-3-2  
EN 61000-3-3  
CNS 15936 Class A  
VCCI-CISPR 32 Class A  
AS/NZS CISPR 32 Class A  
ICES-003 Issue 7 Class A  
FCC Class A

耐受 EN 55035  
IEC 61000-4-2/3/4/5/6/8/11

安全性 UL (CSA 22.2 No 62368-1 & UL62368-1)  
CB (IEC/EN 62368-1)  
CNS15598-1