

Quick Start Guide

L3 GIGABIT ETHERNET (POE) SWITCH

ECS4650-54T | ECS4650-54P



www.edge-core.com

Package Contents



①



②



③



④



⑤



⑥



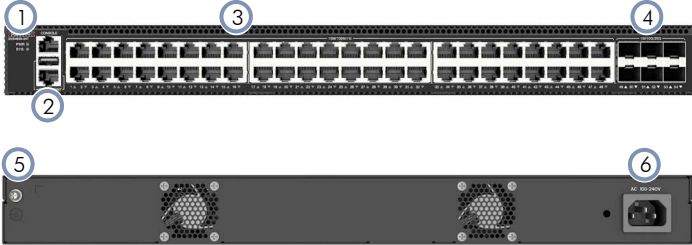
⑦

1. L3 Gigabit Ethernet (PoE) Switch
2. Rack mounting kit—2 brackets and 8 screws
3. Power cord
4. Console cable—RJ-45 to DE-9

5. Grounding wire
6. Six port dust covers
7. Documentation—*Quick Start Guide* (this document) and *Safety and Regulatory Information*

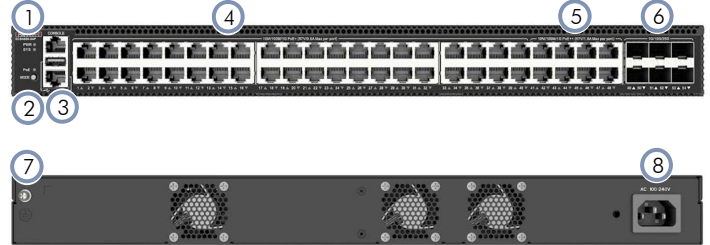
Overview

ECS4650-54T



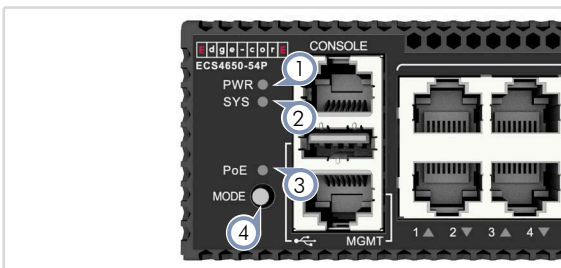
1. System LEDs
2. Management port, Console port, and USB port
3. 48 x 10/100/1000M RJ-45 ports
4. 6 x 1/10/25G SFP28 ports
5. Ground screw
6. AC power socket

ECS4650-54P

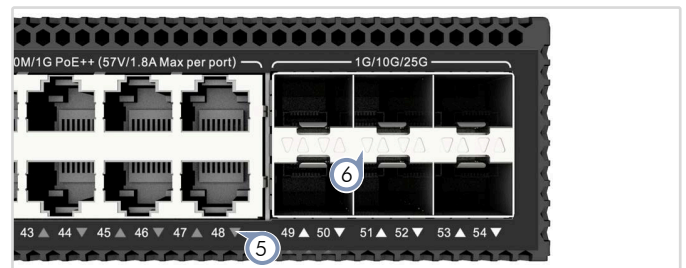


1. System LEDs
2. PoE LED and Mode button
3. Management port, Console port, and USB port
4. 40 x 10/100/1000M RJ-45 PoE+ (IEEE 802.3at) ports
5. 8 x 10/100/1000M RJ-45 PoE++ (IEEE 802.3bt) ports
6. 6 x 1/10/25G SFP28 ports
7. Ground screw
8. AC power socket

System/Port LEDs & Buttons



1. **PWR:** Green (OK)
2. **SYS:** Green (OK), Blinking Green (booting)
3. **PoE:** Green (OK)
4. **Mode Button:** Cycles through two modes
First Press: PoE Mode (PoE LED is on)
Second Press: Switch Mode (PoE LED is off)



5. **RJ-45 1G Ports:** Green/Blinking (link/activity)
6. **SFP28 25G Ports:** Green/Blinking (link/activity)



* 1 5 0 2 0 0 0 2 5 6 0 H R 0 3 *

Installation

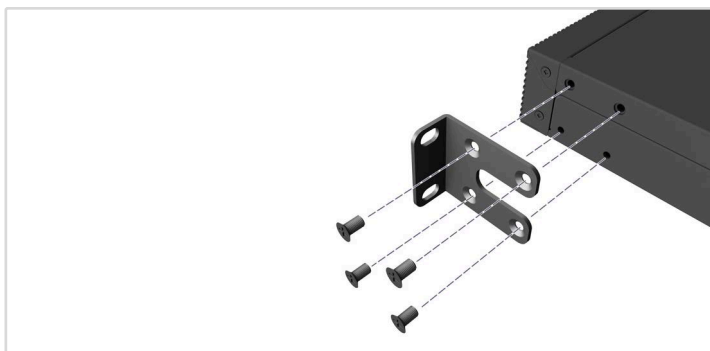


Warning: For a safe and reliable installation, use only the accessories and screws provided with the device. Use of other accessories and screws could result in damage to the unit. Any damages incurred by using unapproved accessories are not covered by the warranty.

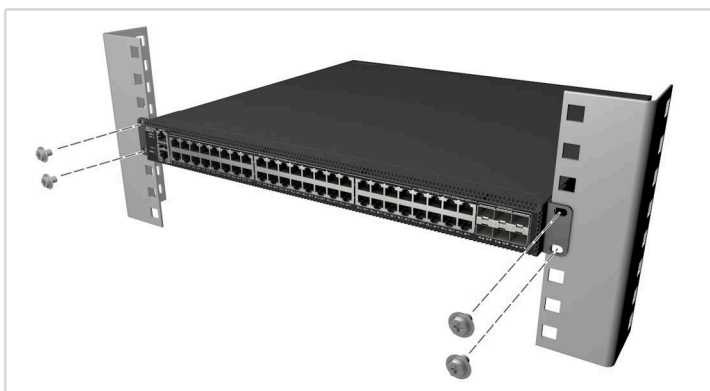
Avertissement: Pour une installation sûre et fiable, utilisez uniquement les accessoires et les vis fournies avec l'appareil. L'utilisation d'autres accessoires et vis pourrait endommager l'appareil. Les dommages causés par l'utilisation d'accessoires non approuvés ne sont pas couverts par la garantie.



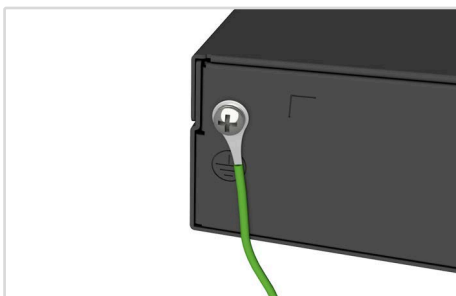
Note: The drawings in this document are for illustration only and may not match your particular model.

1 Mount the Device**1. Attach the Brackets**

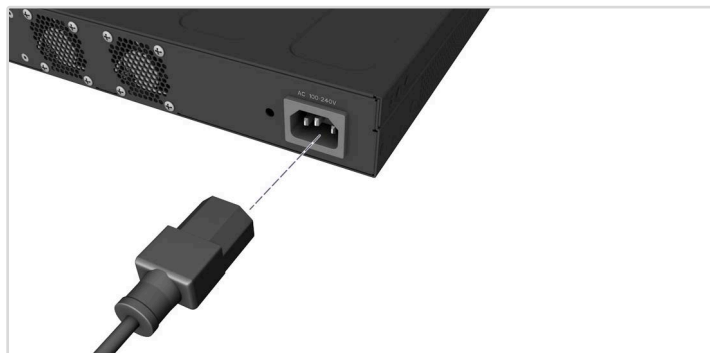
Use the included flathead M4x8 screws to attach the brackets.

**2. Mount the Device**

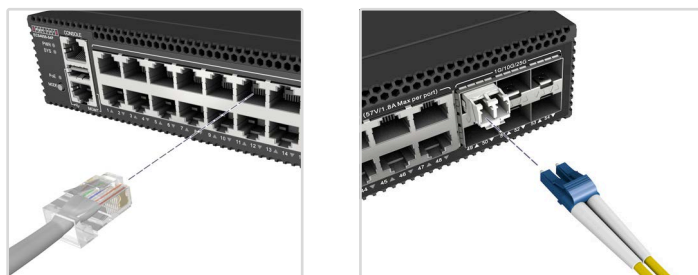
Mount the device in the rack and secure it with rack screws.

2 Ground the Device

Connect the included grounding wire to the grounding point on the rear panel. Then connect the other end of the wire to rack ground.

3 Connect Power

Connect an AC power source to the device.

4 Make Network Connections**RJ-45 PoE Ports**

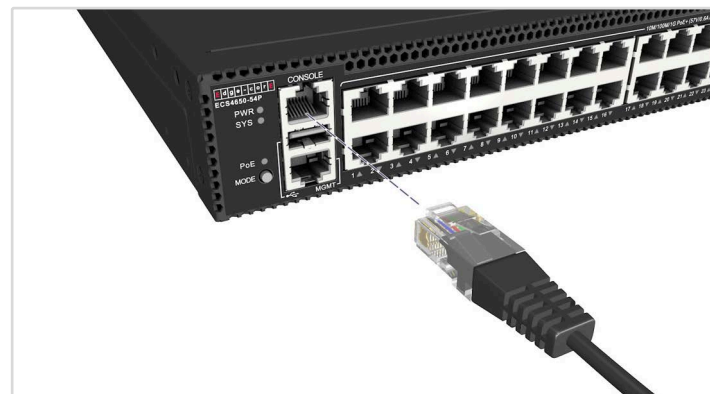
Connect Cat. 5e or better twisted-pair cable.

SFP28 Ports

Install transceivers and then connect fiber optic cabling to the transceiver ports. The following transceivers are supported:

- 1000BASE-SX/LX/EX/ZX and 1000BASE-T (RJ-45)
- 10GBASE-SR/LR
- 25GBASE-SR/LR

Alternatively, connect DAC or AOC cables directly to the SFP28 slots.

5 Make Management Connections**RJ-45 Console Port**

Connect the included console cable and then configure the serial connection: 115200 bps, 8 characters, no parity, one stop bit, 8 data bits, and no flow control.

USB Port

The USB 2.0 port allows you to copy a runtime or configuration file to/from a USB memory stick. (The USB port only supports a simple data storage device using a FAT16/32 file system with or without a partition table.)

Hardware Specifications

Size (WxDxH)	442 x 420 x 43.6 mm (17.4 x 16.54 x 1.72 in.)
Weight	ECS4650-54T: 4.7 kg (10.36 lb) ECS4650-54P: 5.5 kg (12.13 lb)
Temperature	Operating: -5° C to 45° C (23° F to 113° F) Storage: -40° C to 70° C (-40° F to 158° F)
Humidity	Operating: 5% to 95% (non-condensing)
Altitude	Operating: 2000 m (6562 ft)
Power Consumption	ECS4650-54T: 52 Watts maximum ECS4650-54P: 835 Watts maximum
PoE Budget	ECS4650-54P: 740 Watts
AC Input	ECS4650-54T: 100-240 VAC, 50/60Hz, 2 A ECS4650-54P: 100-240 VAC, 50/60Hz, 10 A

Regulatory Compliances

Emissions	EN 55032:2015/A1:2020 EN IEC 61000-3-2:2019/A1:2021 EN 61000-3-3:2013/A2:2021 FCC Class A VCCI-CISPR 32:2016 Class A BSMI (CNS 15936)
Immunity	IEC 61000-4-2/3/4/5/6/8/11 EN 55035:2017/A11:2020
Safety	UL (CSA 22.2 No 62368-1 & UL62368-1) CB (IEC/EN 62368-1) BSMI (CNS 15598-1)
Taiwan RoHS	CNS 15663

Warranty Information and Technical Support

Registering your product enables you to receive a more efficient warranty service. Be sure to register at www.edge-core.com.

快速入門指南

L3 GE 乙太網路 (PoE) 交換器

ECS4650-54T | ECS4650-54P

包裝內容物



1



2



3



4



5



6



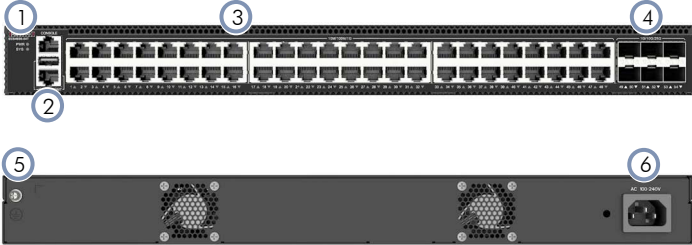
7

1. L3 GIGABIT 乙太網路 (PoE) 交換器
2. 機櫃安裝套件 — 2 個托架和 8 個螺絲
3. 電源線
4. 主控台纜線 — RJ-45 到 DE-9

5. 接地線
6. 六個連接埠防塵蓋
7. 文件 - 快速入門指南 (本文件) 及安全及法規資訊

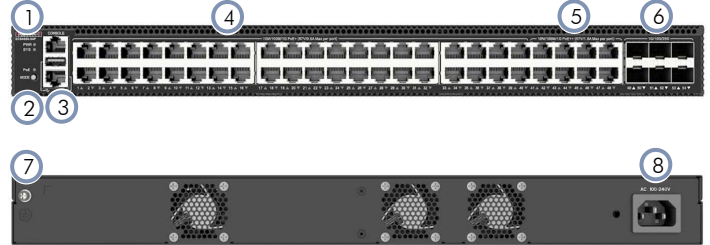
簡介

ECS4650-54T



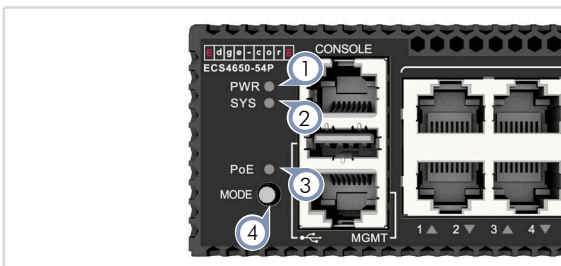
1. 系統 LED
2. 管理連接埠、主控台連接埠及 USB 連接埠
3. 48 x 10/100/1000M RJ-45 連接埠
4. 6 x 1/10/25G SFP28 連接埠
5. 接地螺絲
6. AC 電源插孔

ECS4650-54P

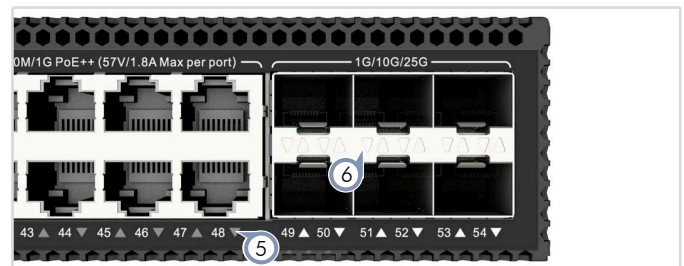


1. 系統 LED
2. PoE LED 和模式按鈕
3. 管理連接埠、主控台連接埠及 USB 連接埠
4. 40 x 10/100/1000M RJ-45 PoE+ (IEEE 802.3at) 連接埠
5. 8 x 10/100/1000M RJ-45 PoE++ (IEEE 802.3bt) 連接埠
6. 6 x 1/10/25G SFP28 連接埠
7. 接地螺絲
8. AC 電源插孔

系統/連接埠 LED 及按鈕



1. PWR : 綠燈 (OK)
2. SYS : 綠燈 (OK)、閃爍綠燈 (開機)
3. PoE : 綠燈 (OK)
4. 模式按鈕 : 循環切換二個模式
按第一次 : PoE 模式 (PoE LED 開啟)
按第二次 : 交換器模式 (PoE LED 皆關閉)



5. RJ-45 1G 連接埠 : 綠燈 / 閃爍 (連結 / 活動)
6. SFP28 25G 連接埠 : 綠燈 / 閃爍 (連結 / 活動)

安裝

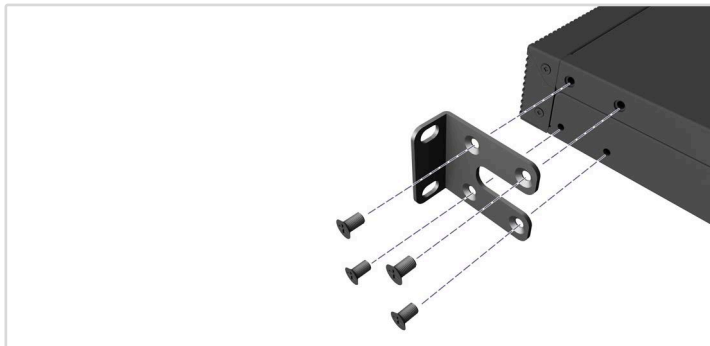


警告：為確保安全且可靠的安裝，請使用裝置隨附的配件與螺絲。使用其他來源的配件與螺絲可能導致配件損壞。使用未經許可配件所造成之損壞，不在保固範圍內。



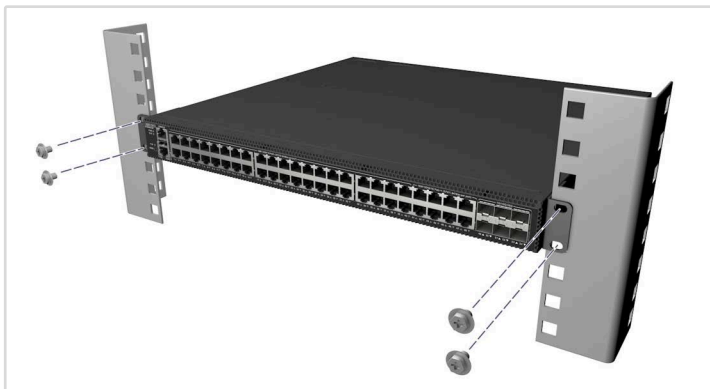
注釋：本文件中的示意圖僅供參考，可能與特定型號有所差異。

1 安裝裝置



1. 安裝托架

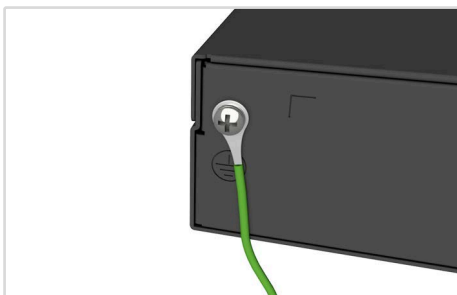
使用內附的平頭 M4x8 螺絲安裝托架。



2. 安裝裝置

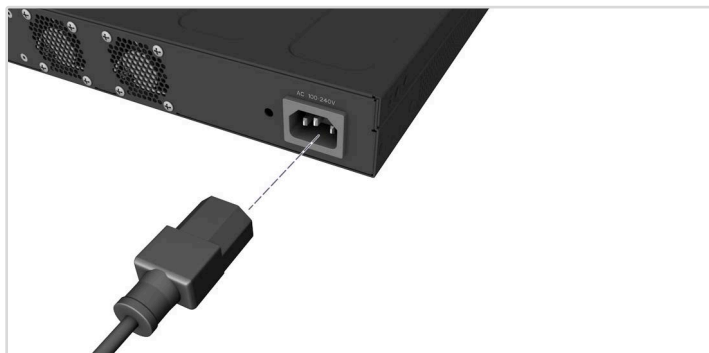
將裝置裝到機櫃中並用機櫃螺絲固定。

2 將裝置接地



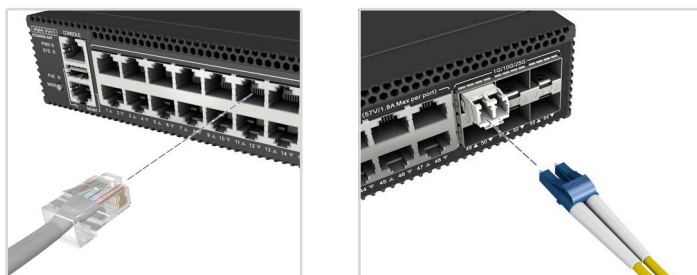
將隨附接地線連接後面板的接地點。接下來，將接地線另一端連接至機櫃接地。

3 連接電源



將 AC 電源連接至裝置。

4 進行網路連線



RJ-45 PoE 連接埠

連接纜線 5e 類或以上的雙絞線。

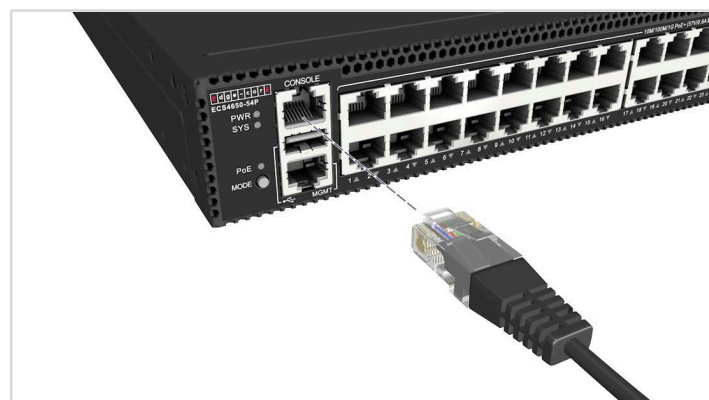
SFP28 連接埠

安裝收發器，然後將光纖電纜連接至收發器連接埠。支援以下收發器：

- 1000BASE-SX/LX/EX/ZX 1000BASE-T (RJ-45)
- 10GBASE-SR/LR
- 25GBASE-SR/LR

或可將 DAC 或 AOC 電纜直接連接至 SFP28 插槽。

5 進行管理連接



RJ-45 控制埠

連接隨附的控制線，接著配置串列連接：115200 bps、8 個字元、無奇偶（檢驗碼）、1 個停止位元、8 個資料位元，並且無流量控制。

USB 連接埠

USB 2.0 連接埠可讓您複製執行階段或組態檔案至 / 自 USB 隨身碟。(USB 連接埠僅支援使用含或不合磁碟分割表格的 FAT16/32 檔案系統的簡易資料儲存裝置。)

硬體規格

尺寸 (寬 x 深 x 高)	442 x 420 x 43.6 mm (17.4 x 16.54 x 1.72 in.)
重量	ECS4650-54T : 4.7 kg (10.36 lb) ECS4650-54P : 5.5 kg (12.13 lb)
溫度	操作 : -5° C 至 45° C (23° F 至 113° F) 儲存 : -40° C 至 70° C (-40° F 至 158° F)
濕度	操作 : 5% 至 95% (無冷凝)
海拔	操作 : 2000 m (6562 ft)
耗電量	ECS4650-54T : 最大 52 瓦 ECS4650-54P : 最大 835 瓦
PoE 預算	ECS4650-54P : 740 瓦
AC 輸入	ECS4650-54T : 100-240 VAC · 50/60Hz · 2 A ECS4650-54P : 100-240 VAC · 50/60Hz · 10 A

符合法規

輻射	EN 55032:2015/A1:2020 EN IEC 61000-3-2:2019/A1:2021 EN 61000-3-3:2013/A2:2021 FCC Class A VCCI-CISPR 32:2016 Class A BSMI (CNS 15936)
電磁耐受性	IEC 61000-4-2/3/4/5/6/8/11 EN 55035:2017/A11:2020
安全性	UL (CSA 22.2 No 62368-1 & UL62368-1) CB (IEC/EN 62368-1) BSMI (CNS 15598-1)
臺灣 RoHS	CNS 15663

保固資訊及技術支援

註冊產品可讓您收到更有效的保固服務資訊。請確定前往 www.edge-core.com 註冊。
