

How to upgrade firmware from V1.1.2.0 to V1.2.2.x Procedure

Before upgrade to V1.2.2.x firmware, please read the following notification.

If you does not agree, please stay current version.

- After upgrading the V1.2.2.x code, you could not downgrade to V1.1.2.0
(Reason: The RAM location already change)
- If you have any problem, Please contact Edgecore Tech Support Team for help.

Upgrade to V1.2.2.x firmware from V1.1.2.0

(Upgrading V1.1.2.0 to V1.2.2.x support from CLI only. Don't upgrade from web UI.)

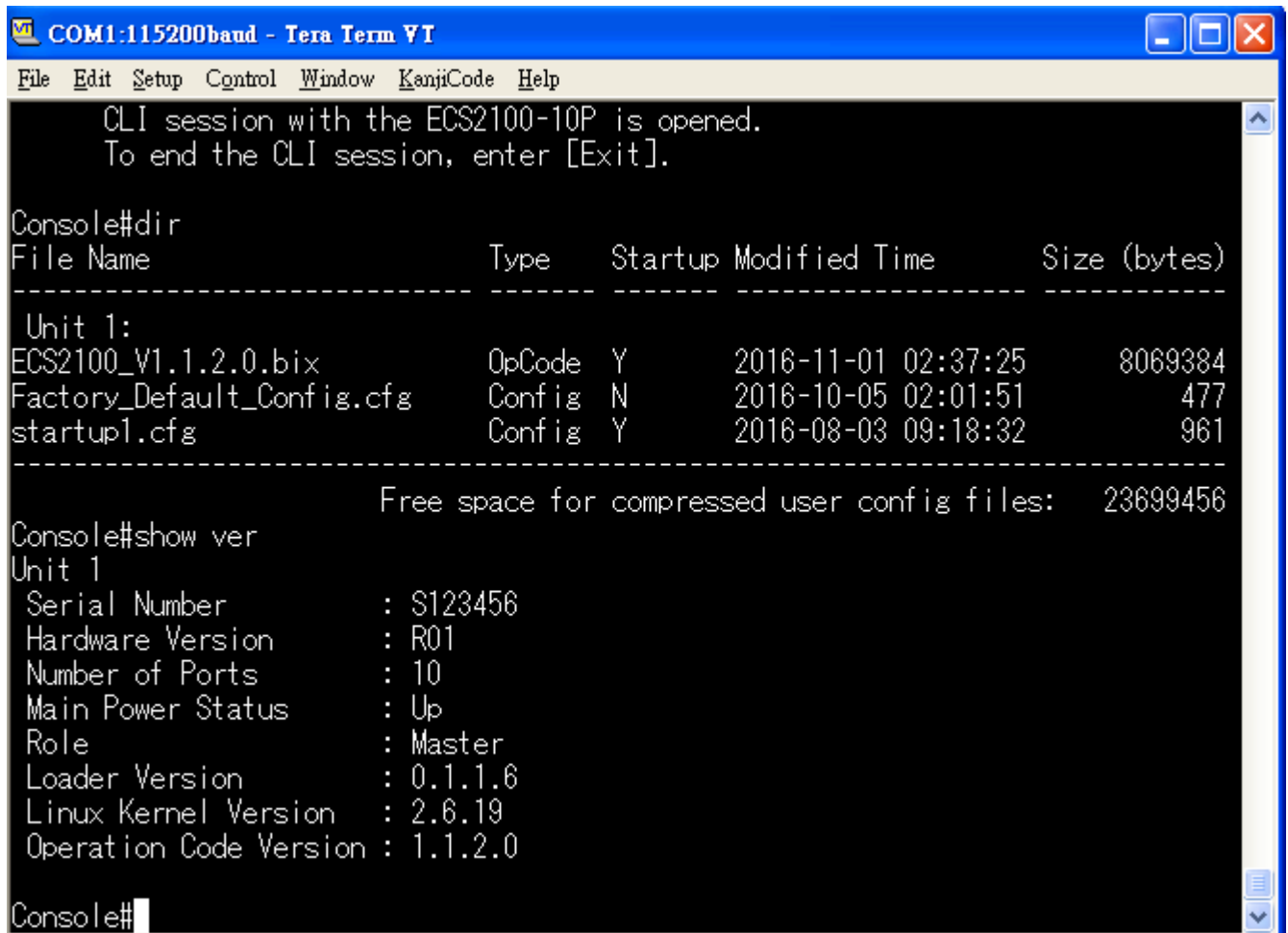
Please make sure to follow the procedure step by step.

If your version is V1.2.2.0 or V1.2.2.x already, you could jump to the [page 5](#) to upgrade the last version firmware directly.

1. Check current ECS2100 version:

Loader Version:0.1.1.6

Operation Code Version: 1.1.2.0



```
COM1:115200baud - Tera Term VT
File Edit Setup Control Window KanjiCode Help
CLI session with the ECS2100-10P is opened.
To end the CLI session, enter [Exit].

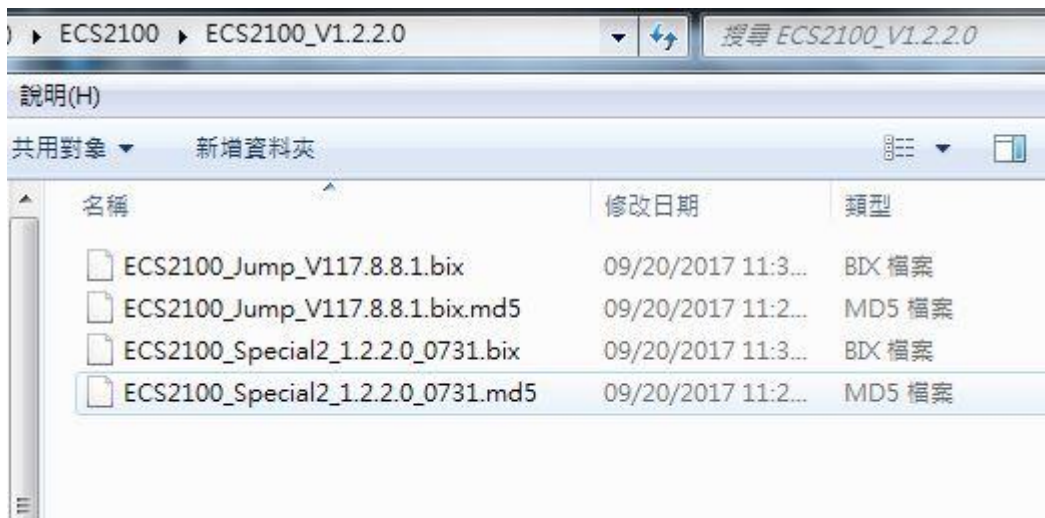
Console#dir
File Name                               Type      Startup Modified Time      Size (bytes)
-----
Unit 1:
ECS2100_V1.1.2.0.bix                     OpCode   Y      2016-11-01 02:37:25    8069384
Factory_Default_Config.cfg              Config   N      2016-10-05 02:01:51      477
startup1.cfg                             Config   Y      2016-08-03 09:18:32      961

Free space for compressed user config files: 23699456

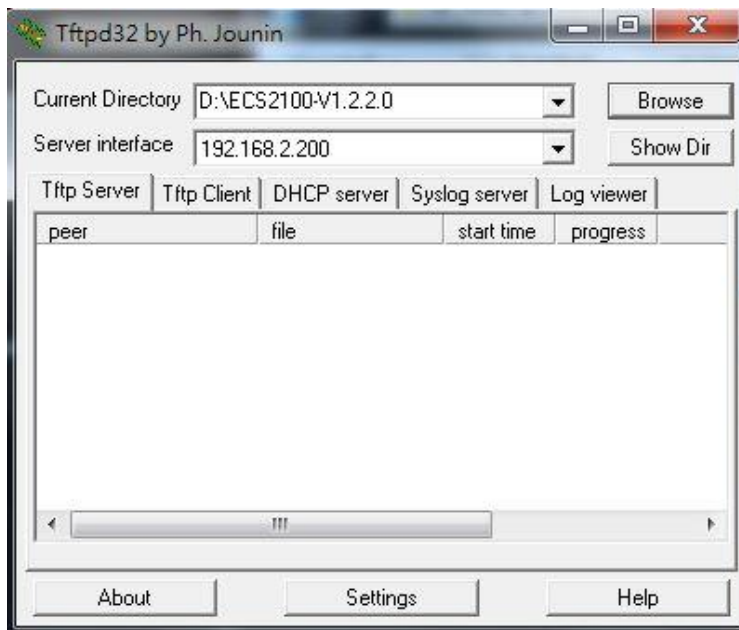
Console#show ver
Unit 1
Serial Number       : S123456
Hardware Version    : R01
Number of Ports     : 10
Main Power Status   : Up
Role                : Master
Loader Version      : 0.1.1.6
Linux Kernel Version : 2.6.19
Operation Code Version : 1.1.2.0

Console#
```

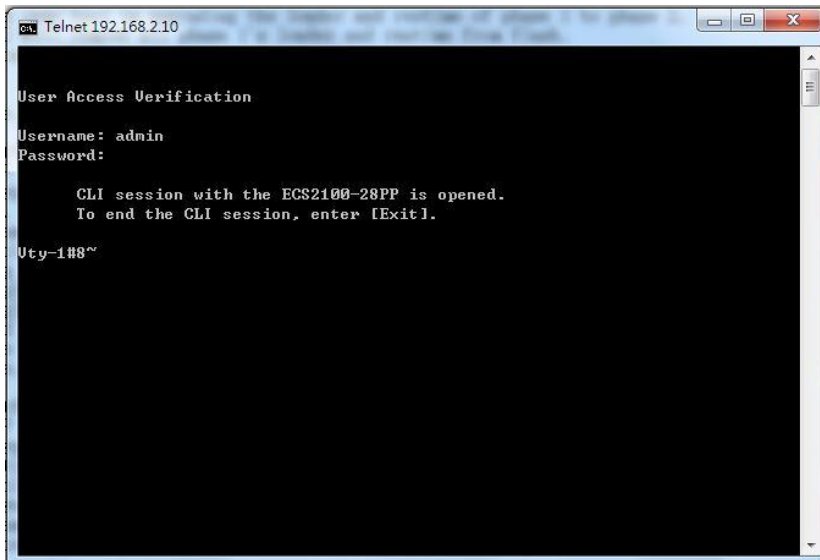
- Copy ECS2100_Jump_V117.8.8.1.bix & ECS2100_Special2_1.2.2.0_0731.bix to D:\ECS2100-V1.2.2.0



- Run the TFTP server (Set the Directory to : D:\ECS2100-V1.2.2.0)



- Use Telnet or console to connect the switch.
(We don't upgrade from web , we support CLI method only).



5. Follow the steps to upgrade **“ECS2100_Jump_V117.8.8.1.bix”**

Step1:

```
Console#copy tftp file
```

```
TFTP server IP address: 192.168.2.200
```

```
Choose file type:
```

```
1. config; 2. opcode: 2
```

```
Source file name: ECS2100_Jump_V117.8.8.1.bix
```

```
Destination file name: ECS2100_Jump_V117.8.8.1.bix
```

```
Console#config
```

```
Console(config)#boot system opcode: ECS2100_Jump_V117.8.8.1.bix
```

```
Console(config)#end
```

```
Console#reload
```

```
System will be restarted. Continue <y/n>? y
```

```
Console#copy tftp file
TFTP server IP address: 192.168.2.200
Choose file type:
1. config; 2. opcode: 2
Source file name: ECS2100_Jump_V117.8.8.1.bix
Destination file name: ECS2100_Jump_V117.8.8.1.bix
Flash programming started.
Flash programming completed.
Success.
Console#configure
Console(config)#boot system opcode:ECS2100_Jump_V117.8.8.1.bix
Success.
Console(config)#end
Console#reload
System will be restarted. Continue <y/n>? y
Console#Restarting system.
```

6. Follow the steps to upgrade **“ECS2100_Special2_1.2.2.0_0731.bix”**

Step2:

```
Console#copy tftp file
```

TFTP server IP address: 192.168.2.200

Choose file type:

1. uboot_runtime_u: 1

This system will automatically reload after finish.

Are you sure you want to upgrade uboot and runtime together(y/n)? y

Source file name: ECS2100_Special2_1.2.2.0_0731.bix

<It will perform the upgrade and reload automatically.>

```
Console#copy tftp file
TFTP server IP address: 192.168.2.200
Choose file type:
 1. uboot_runtime_u: 1
This system will automatically reload after finish.
Are you sure you want to upgrade uboot and runtime together(y/n)? y
Source file name: ECS2100_Special2_1.2.2.0_0731.bix
```

7. Check the version and file name and **Done**
 - a. Loader :0.2.1.1
 - b. Operation Code Version:1.2.2.0
 - c. File name:runtime_p2.bix

```
Console#show version
Unit 1
Serial Number      : EC1551000671
Hardware Version   : R01
Number of Ports    : 10
Main Power Status  : Up
Role               : Master
Loader Version     : 0.2.1.1
Linux Kernel Version : 2.6.19
Operation Code Version : 1.2.2.0

Console#dir
File Name          Type      Startup Modified Time      Size (bytes)
-----
Unit 1:
runtime_p2.bix    OpCode   Y        2017-07-31 05:53:26      8597768
Factory_Default_Config.cfg Config    N        2016-01-04 06:09:34         477
startup1.cfg      Config   Y        2016-01-04 06:09:40         879
-----
Free space for compressed user config files: 23146496
Total space: 32 MB
```

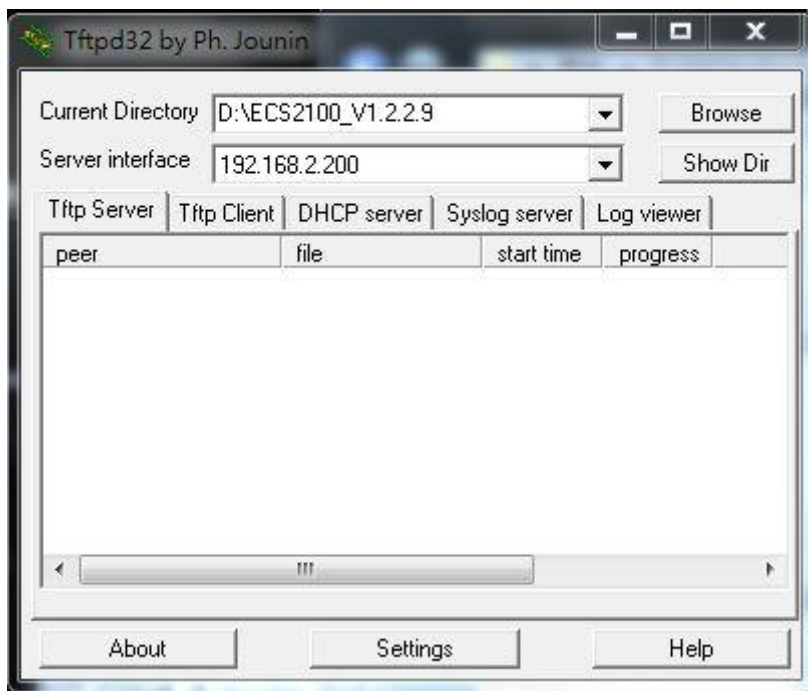
8. **ECS2100_Jump_V117.8.8.1.bix** and **ECS2100_Special2_1.2.2.0_0731.bix** are special codes for upgrading v1.1.2.0 to v1.2.2.0 purpose only.
(It is not the same with ECS2100_V1.2.2.0.bix)

Firmware Name	Purpose
ECS2100_jump_V117.8.8.1.bix	For upgrade v1.1.2.0 to v1.2.2.0 use only
ECS2100_Special2_1.2.2.0_0731.bix	For upgrade v1.1.2.0 to v1.2.2.0 use only
ECS2100_V1.2.2.0.bix	For v1.2.2.0 use.

Upgrade to V1.2.2.x firmware from V1.2.2.0

(Upgrading V1.2.2.x to V1.2.2.15 support from CLI & Web)

1. Copy ECS2100_V1.2.2.9.bix to D:\ECS2100-V1.2.2.9



2. Follow the steps to upgrade **“ECS2100_V1.2.2.9.bix”**

Console#copy tftp file

TFTP server IP address: 192.168.2.200

Choose file type:

1. config; 2. opcode: 2

Source file name: ECS2100_V1.2.2.9.bix

Destination file name: ECS2100_V1.2.2.9.bix

Console#config

Console(config)#boot system opcode: ECS2100_V1.2.2.9.bix

Console(config)#end

Console#reload

System will be restarted. Continue <y/n>? y

```

Console#copy tftp file
TFTP server IP address: 192.168.2.200
Choose file type:
 1. config; 2. opcode: 2
Source file name: ECS2100_V1.2.2.9.bix
Destination file name: ECS2100_V1.2.2.9.bix
Flash programming started.
Flash programming completed.
Success.
Console#

```

```

Console#configure
Console(config)#boot system opcode:ECS2100_V1.2.2.9.bix
Success.
Console(config)#end
Console#reload
System will be restarted. Continue <y/n>? y

```

Check the version and file name and **Done**

- a. Loader :0.2.1.1
- b. Operation Code Version:1.2.2.9
- c. File name:ECS2100-V1.2.2.9.bix

3.

```

Console#dir
File Name                               Type      Startup Modified Time          Size (bytes)
-----
Unit 1:
ECS2100_V1.2.2.9.bix                    OpCode   Y       2016-12-16 06:20:04     8,798,472
runtime_p2.bix                          OpCode   N       2017-07-31 05:53:26     8,597,768
Factory_Default_Config.cfg              Config   N       2016-01-04 06:09:34         477
startup1.cfg                             Config   Y       2016-01-04 06:09:40         879
-----
Free space for compressed user config files: 15,540,224
Total space: 33,554,432

Console#show version
Unit 1
Serial Number       : EC1551000671
Hardware Version    : R01
Number of Ports     : 10
Main Power Status   : Up
Role                : Master
Loader Version      : 0.2.1.1
Linux Kernel Version : 2.6.19
Operation Code Version : 1.2.2.9

```

FIRMWARE CHANGES AND ENHANCEMENTS:**Runtime V1.2.2.15, Loader 0.2.1.1**

	EPR	Headline
1	ECS2100	[enhance] support LACP passive mode
2	ECS2100	[enhance] switching B/W L2 DHCP relay and L3 DHCP relay
3	ECS2100	[enhance] support simple chinese web page, web help page.

Runtime V1.2.2.9, Loader 0.2.1.1

	EPR	Headline
1	ECS2100	[enhance] remove ERPS
2	ECS2100	[enhance] support RIP

Runtime V1.2.2.0, Loader 0.2.1.1

	EPR	Headline
1	ECS2100	[enhance] support QinQ
2	ECS2100	[enhance] support mDNS
3	ECS2100	[enhance] support Static routing
4	ECS2100	[enhance] Support IP Cluster (Software Stacking)
5	ECS2100	[enhance] support ERPS
6	ECS2100	[enhance] support Web Authentication
7	ECS2100	[enhance] support SFTP